

defining new
standards in living..



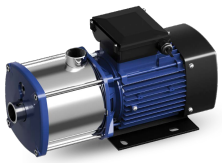
Pumps



about us

We have deep commitments in providing the high quality products under our premium brands for each segment. Products are manufactured under strict quality control process and employ cutting edge technology and innovations. State of the art plant and manufacturing technology combined with the latest innovations is well appreciated by our customers around the world. Our brands are the symbol of quality, reliability and innovations. We strive to bring products with next generation technology & innovations and this way continually defining new standards in living





CMW Series

04



VMW Series

16



CSW Series

06



PKW Series

18



2CSW Series

08



JPCW1 Series

20



CFW Series

10



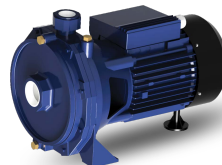
CCW1 Series

22



JPW Series

12



2CCW1 Series

24



PULZ Series

14

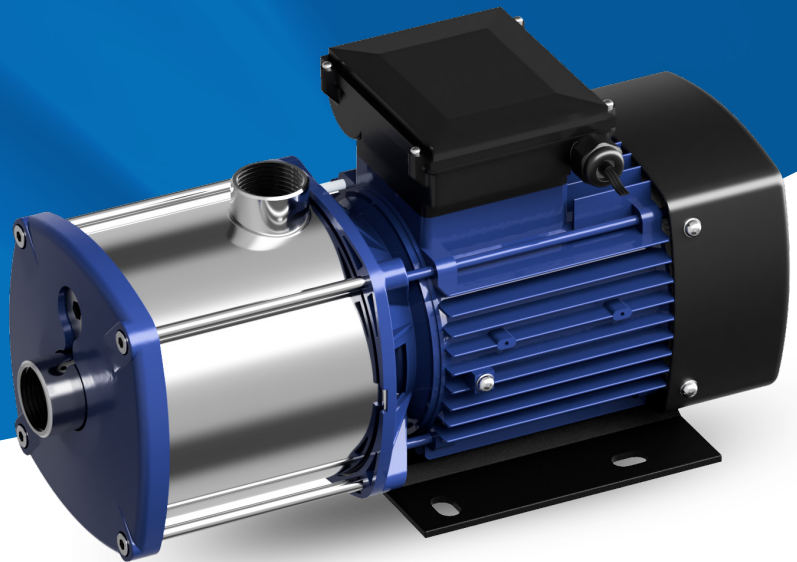


PPW1 Series

26

HORIZONTAL MULTISTAGE CENTRIFUGAL PUMP

CMW Series



FEATURES

- Horizontal multistage non-self-priming close-coupled centrifugal pump.
- Axial inlet port, radial outlet port.
- Excellent corrosion resistance by stainless-steel casing and impeller.
- Robust and Compact design.
- Low noise, high reliability, wide performance range.
- Designed for Continuous Operation.
- Can adopt to smart controls integration Energy efficient for a longer period.

APPLICATIONS

- Domestic water supply and pressure boosting
- Heating and cooling system
- Water treatment process
- Industrial water transfer

MATERIALS OF CONSTRUCTION

- Pump Body Casing: Stainless Steel, AISI 304 / AISI 316
- Impeller: Stainless Steel, AISI 304 / AISI 316
- Shaft: Stainless Steel, AISI 304 / AISI 316
- Mechanical Seal: Carbon / Ceramic (or) Silicon carbide
- O-ring: Viton

MOTOR

- Totally Enclosed Fan Cooled induction motor with oversized Greased-for-life ball bearings,
- Inbuilt thermal overload protection.
- Degree of protection: IP55, Insulation Class: F
- Suitable for power supply: AC, 50Hz, single Phase (220-240V)/Three phase(380-415V)

OPERATING LIMITS

- Maximum working pressure: 10 bar
- Minimum & Maximum Liquid temperature: -20 to +104°C.
- Maximum Ambient Temperature: Up to +50° C.
- Service/Duty type: **S1** (Continuous)

APPLICABLE DESIGN STANDARDS

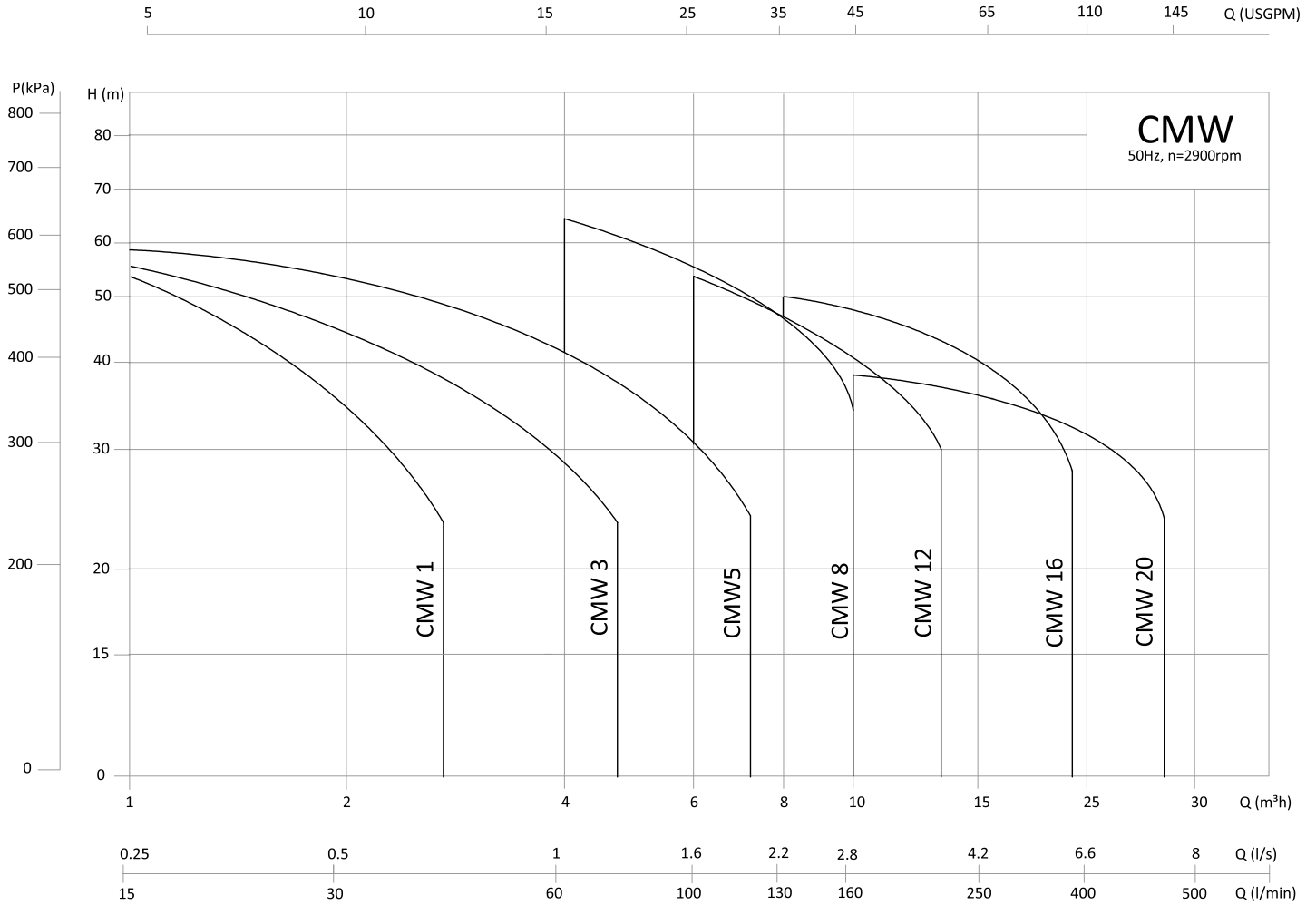
- IEC 60335, IEC 60334, CEI 2-3, CEI 61-69



CERTIFICATIONS

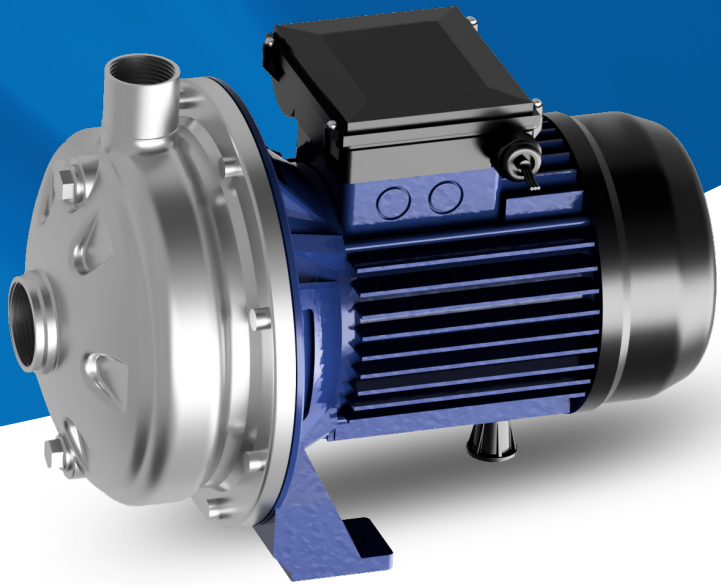
- ISO 9001:2015
- ISO 14001:2015

PERFORMANCE RANGE



STAINLESS STEEL CENTRIFUGAL PUMP

CSW Series



FEATURES

- Close-coupled single impeller centrifugal pump with back pull-out design.
- Axial inlet port, radial outlet port.
- Excellent corrosion resistance by stainless-steel casing and impeller.
- Robust and Compact design.
- Silent and maintenance-free operation.
- Designed for Continuous Operation.
- Can adopt to smart controls integration Energy efficient for a longer period.

APPLICATIONS

- Domestic water supply and pressure boosting
- Gardening/orchards irrigation
- Rainwater utilization/harvesting and light industrial use
- Water circulation

MATERIALS OF CONSTRUCTION

- Pump Body Casing: Stainless Steel, AISI 304 / AISI 316
- Impeller: Stainless Steel, AISI 304 / AISI 316
- Shaft: Stainless Steel, AISI 304 / AISI 316
- Mechanical Seal: Carbon / Silicon carbide
- O-ring: Viton

MOTOR

- Totally Enclosed Fan Cooled induction motor with oversized Greased-for-life ball bearings,
- Inbuilt thermal overload protection.
- Degree of protection: IP55, Insulation Class: F
- Suitable for power supply: AC, 50Hz, single Phase (220-240V)/Three phase(380-415V)

OPERATING LIMITS

- Maximum working pressure: 10 bar
- Minimum & Maximum Liquid temperature: -20 to +104°C.
- Maximum Ambient Temperature: Up to +50° C.
- Service/Duty type: **S1** (Continuous)

APPLICABLE DESIGN STANDARDS

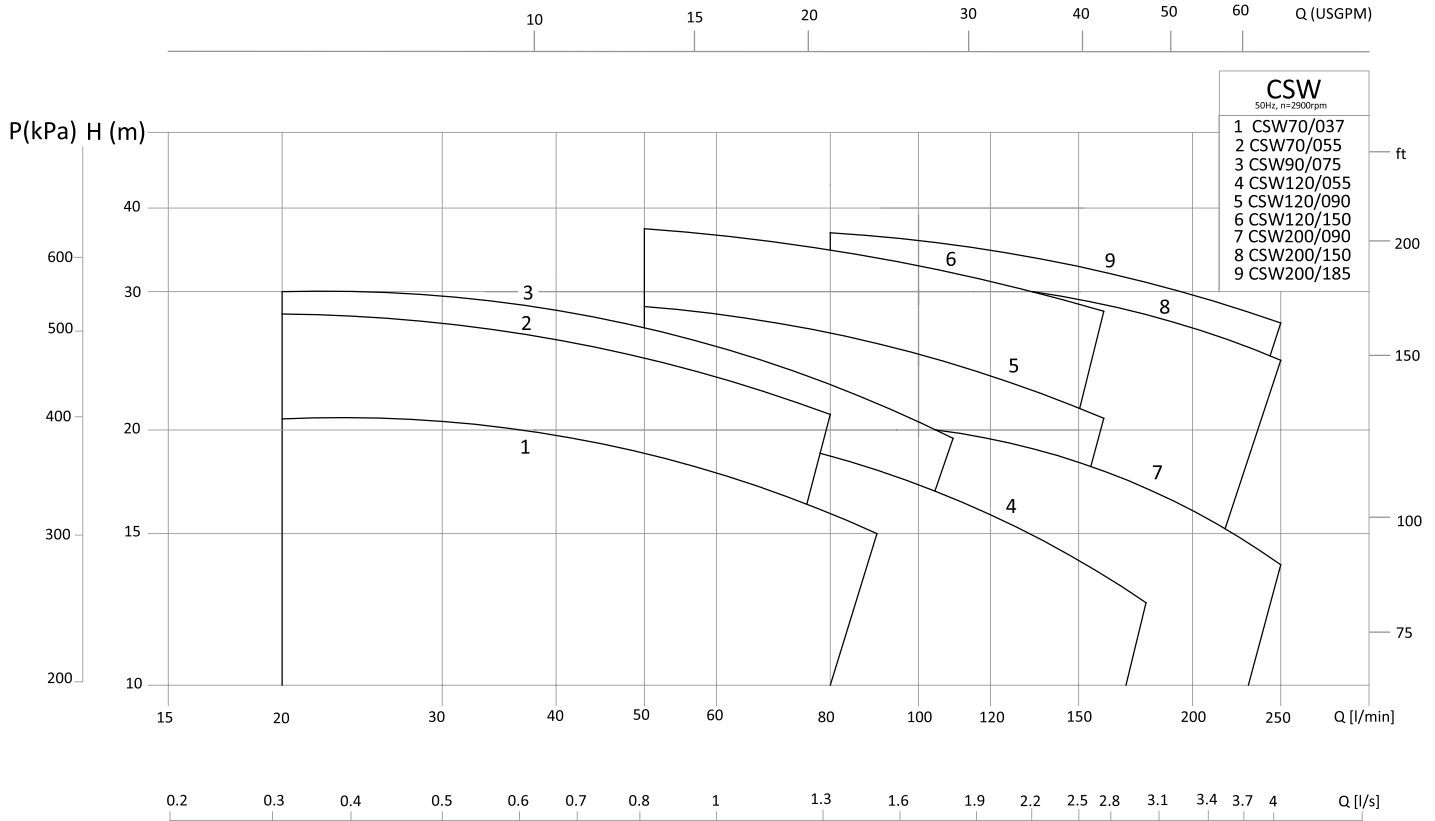
- IEC 60335, IEC 60334, CEI 2-3, CEI 61-69



CERTIFICATIONS

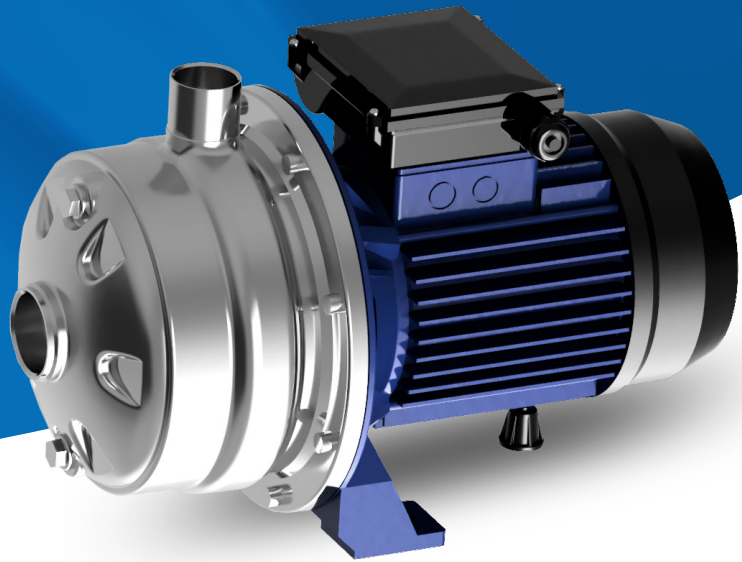
- ISO 9001:2015
- ISO 14001:2015

PERFORMANCE RANGE



STAINLESS STEEL CENTRIFUGAL PUMP

2CSW Series



FEATURES

- Close-coupled twin impeller centrifugal pump with back pull-out design.
- Axial inlet port, radial outlet port.
- Excellent corrosion resistance by stainless-steel casing and impeller.
- Robust and Compact design.
- Silent and maintenance-free operation.
- Designed for Continuous Operation.
- Can adopt to smart controls integration Energy efficient for a longer period.

APPLICATIONS

- Domestic water supply and pressure boosting
- Gardening/orchards irrigation
- Rainwater utilization/harvesting and light industrial use
- Water circulation

MATERIALS OF CONSTRUCTION

- Pump Body Casing: Stainless Steel, AISI 304 / AISI 316
- Impeller: Stainless Steel, AISI 304 / AISI 316
- Shaft: Stainless Steel, AISI 304 / AISI 316
- Mechanical Seal: Carbon / Silicon carbide
- O-ring: Viton

MOTOR

- Totally Enclosed Fan Cooled induction motor with oversized Greased-for-life ball bearings,
- Inbuilt thermal overload protection
- Degree of protection: IP55, Insulation Class: F
- Suitable for power supply: AC, 50Hz, single Phase (220-240V)/Three phase(380-415V)

OPERATING LIMITS

- Maximum working pressure: 10 bar
- Minimum & Maximum Liquid temperature: -20 to +104°C.
- Maximum Ambient Temperature: Up to +50° C.
- Service/Duty type: **S1** (Continuous)

APPLICABLE DESIGN STANDARDS

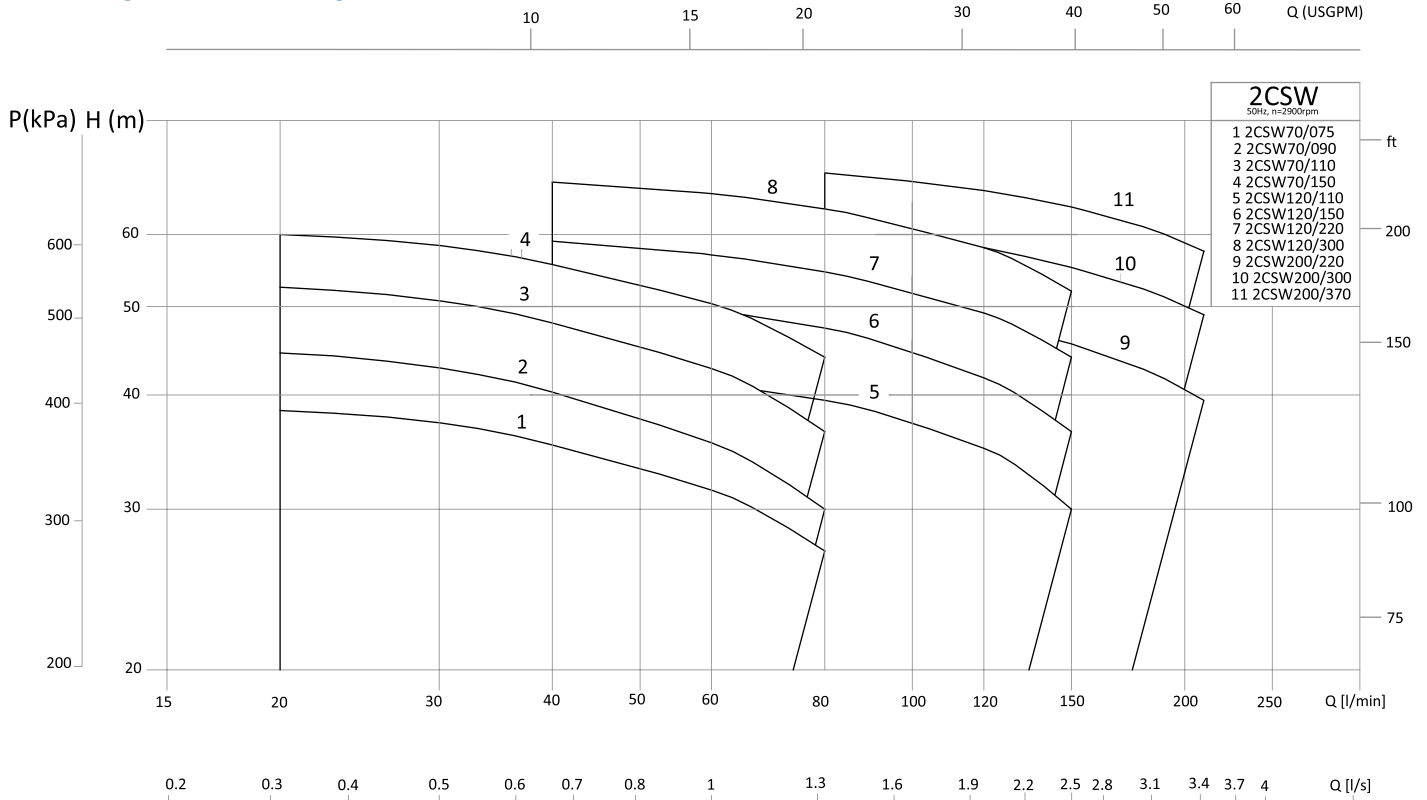
- IEC 60335, IEC 60334, CEI 2-3, CEI 61-69



CERTIFICATIONS

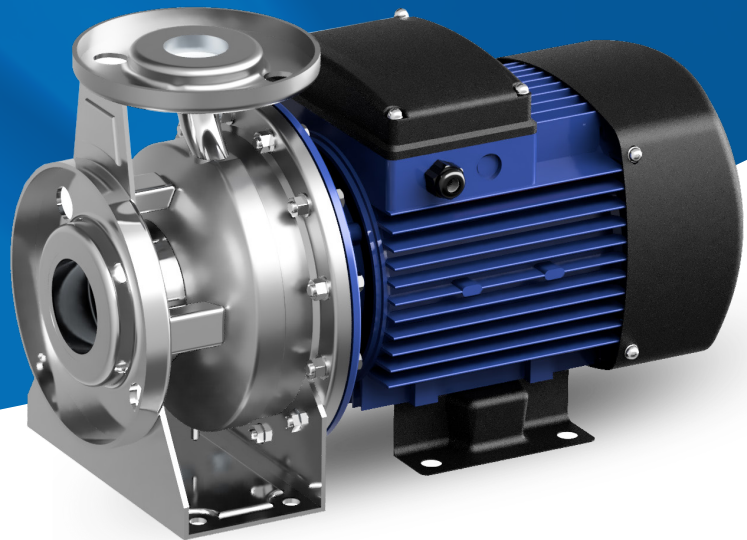
- ISO 9001:2015
- ISO 14001:2015

PERFORMANCE RANGE



STAINLESS STEEL CENTRIFUGAL PUMP

CFW Series



FEATURES

- Horizontal centrifugal pump with back pull-out design.
- Axial inlet port, radial outlet port and horizontal shaft.
- Hydraulically balanced impellers
- Excellent corrosion resistance by stainless-steel casing and impeller.
- Designed for Continuous Operation.
- Can adopt to smart controls integration Energy efficient for a longer period.

APPLICATIONS

- Domestic water supply and pressure boosting
- Heating and cooling for industrial process
- Water supply for civil, agricultural, and industrial plants
- Irrigation

MATERIALS OF CONSTRUCTION

- Pump Body Casing: Stainless Steel, AISI 304 / AISI 316
- Impeller: Stainless Steel, AISI 304 / AISI 316
- Shaft: Stainless Steel, AISI 304 / AISI 316
- Mechanical Seal: Carbon / Silicon carbide
- O-ring: Viton

MOTOR

- Totally Enclosed Fan Cooled induction motor with oversized Greased-for-life ball bearings.
- Inbuilt thermal overload protection.
- Degree of protection: IP55, Insulation Class: F
- Suitable for power supply: AC, 50Hz, single Phase (220-240V)/Three phase(380-415V)

OPERATING LIMITS

- Maximum working pressure: 10 bar
- Maximum Liquid temperature: +104°C.
- Maximum Ambient Temperature: Up to +50° C.
- Service/Duty type: **S1** (Continuous)

APPLICABLE DESIGN STANDARDS

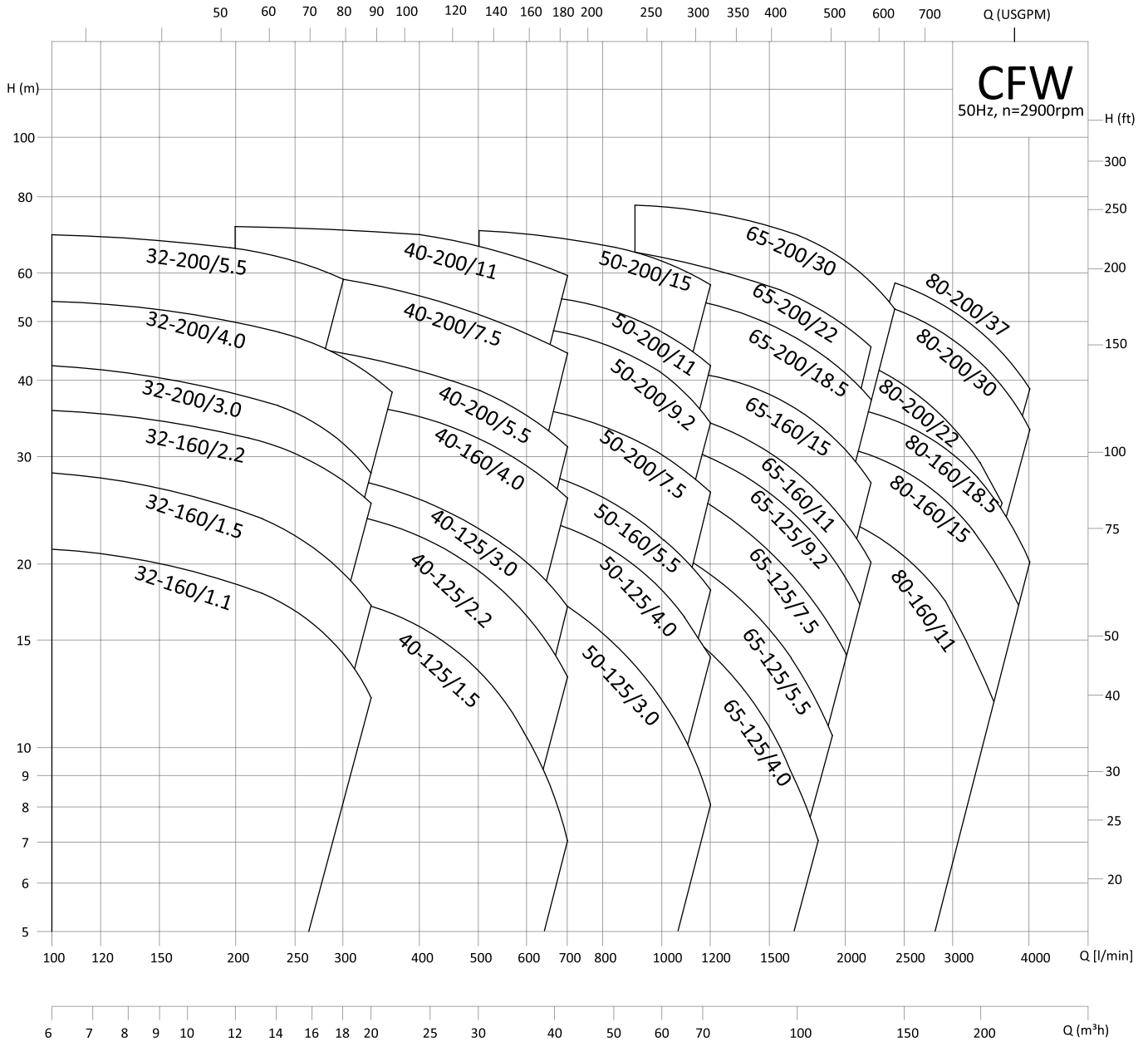
- IEC 60335, IEC 60334, CEI 2-3, CEI 61-69



CERTIFICATIONS

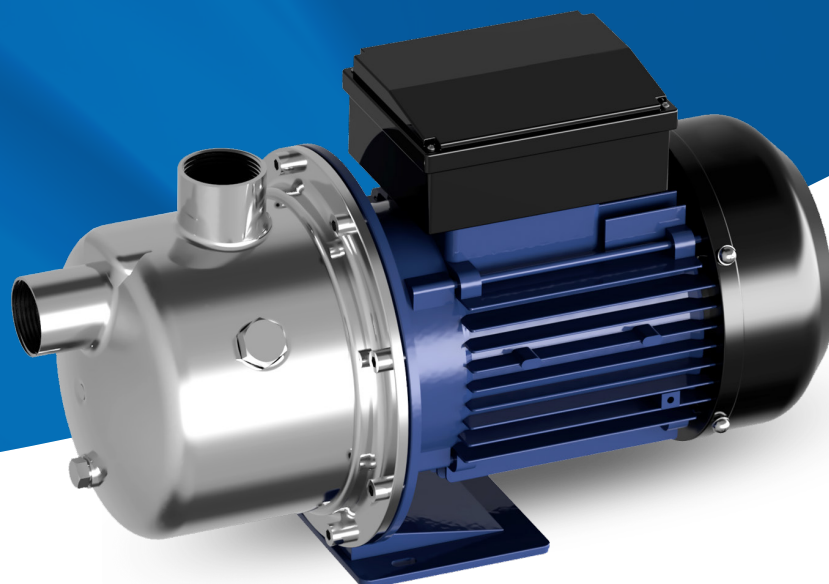
- ISO 9001:2015
- ISO 14001:2015

PERFORMANCE RANGE



SELF-PRIMING JET PUMP

JPW Series



FEATURES

- Close coupled single-stage Self-priming jet pump with built-in ejector system
- Excellent corrosion resistance by stainless-steel casing and impeller.
- Robust and Compact design.
- Silent and maintenance-free operation.
- Excellent suction lift characteristics.
- Can adopt to smart controls integration Energy efficient for a longer period.

APPLICATIONS

- Domestic water supply and pressure boosting
- Garden irrigation systems
- Rainwater utilization/harvesting and light industrial use
- Emptying of tanks and swimming pools

MATERIALS OF CONSTRUCTION

- Pump Body Casing: Stainless Steel, AISI 304
- Impeller: Stainless Steel, AISI 304
- Shaft: Stainless Steel, AISI 304
- Mechanical Seal: Carbon /Ceramic
- O-ring: Viton

MOTOR

- Totally Enclosed Fan Cooled induction motor with oversized Greased-for-life ball bearings,
- Inbuilt thermal overload protection.
- Degree of protection: IP55, Insulation Class: F
- Suitable for power supply: AC, 50Hz, single Phase (220-240V)/Three phase(380-415V)

OPERATING LIMITS

- Maximum working pressure: 8 bar
- Maximum Liquid temperature: +50°C.
- Maximum Ambient Temperature: Up to +50° C.
- Manometric suction lift/head up to 9 metres.
- Service/Duty type: **S1** (Continuous)

APPLICABLE DESIGN STANDARDS

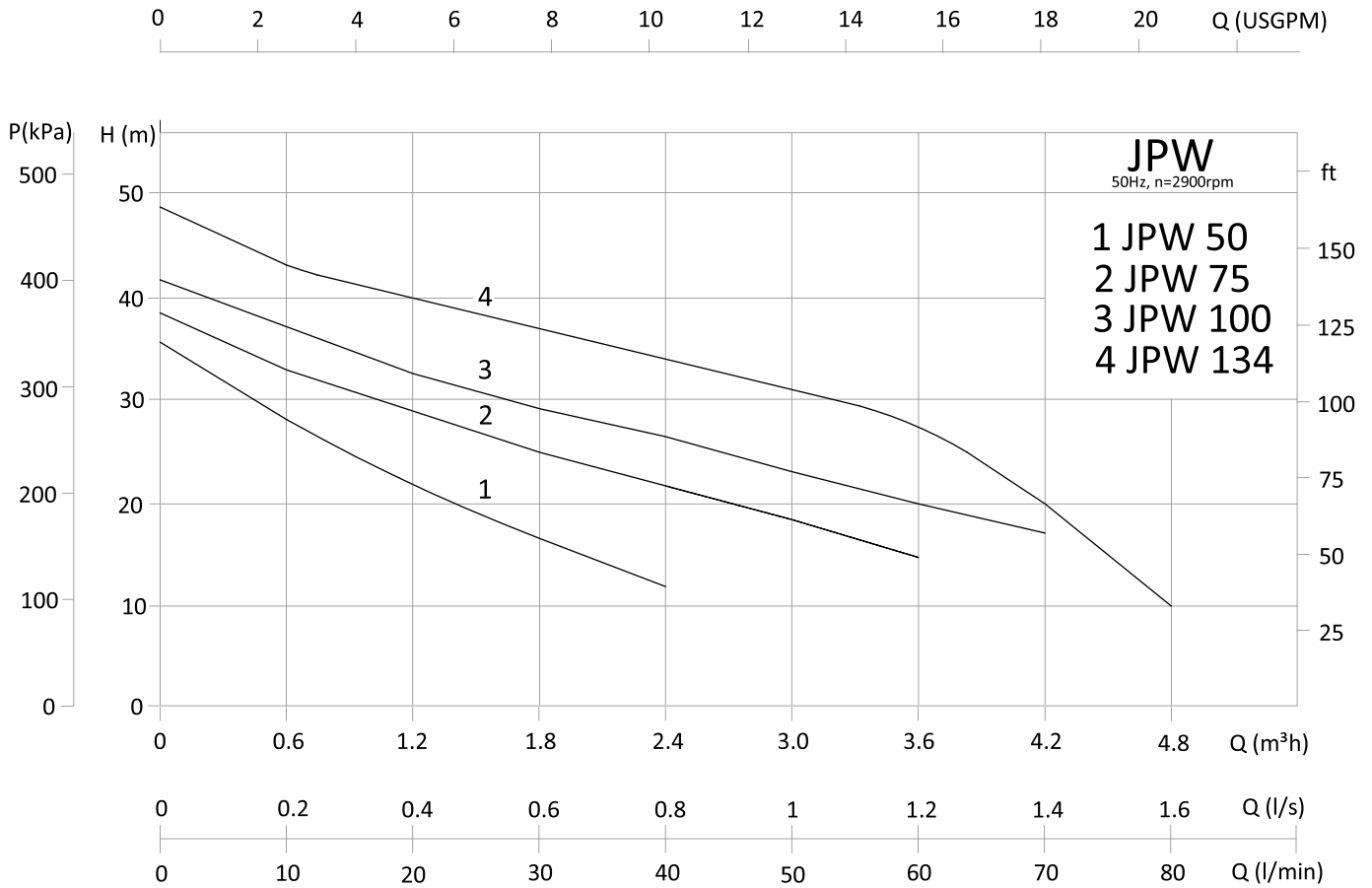
- IEC 60335, IEC 60334, CEI 2-3, CEI 61-69



CERTIFICATIONS

- ISO 9001:2015
- ISO 14001:2015

PERFORMANCE RANGE



INTELLIGENT SELF-PRIMING VARIABLE SPEED DRIVE CONSTANT PRESSURE PUMP

PULZ EPS Series



FEATURES

- PULZ EPS is ultra-energy efficient pressure boosting multistage self-priming centrifugal pump equipped with ECM (electronically commutated, synchronous motor with permanent magnet motor)
- The intelligent built-in control enables self and instant change to deliver the pressure you demand.
- Robust and compact design to suit harsh environment and limited space conditions.
- All in one design with built in Pressure Sensor, Check Valve, Pressure Tank, Control Screen.
- Ultra-silent operation
- Maintenance free, 14 fault alarms displayed on control screen.
- Easy to install, Easy to use
- High suction lift

APPLICATIONS

- Domestic water supply
- Pressure boosting from ground /roof tank.
- Pressure boosting from shallow wells
- Residential water supply

MATERIALS OF CONSTRUCTION

- Pump Body Casing: Enhanced PPO
- Inlet & Outlet connection: Stainless Steel, AISI 304
- Impeller: Enhanced PPO
- Shaft: Stainless Steel, AISI 304
- Mechanical Seal: Silicon Carbide/Graphite
- O-ring: NBR Rubber

MOTOR

- Permanent magnet motor with intelligent variable speed drive to give IE5 efficiency
- Inbuilt Dry run protection
- Degree of protection: IP55, Insulation Class: F
- Suitable for power supply: AC, 50/60 Hz, single Phase (220-240) V

OPERATING LIMITS

- Maximum working pressure: 10 bar
- Maximum Liquid temperature: +70°C.
- Maximum Ambient Temperature: Up to +55° C.
- Manometric suction lift/head up to 8.5 metres
- Service/Duty type: S1 (Continuous)

APPLICABLE DESIGN STANDARDS

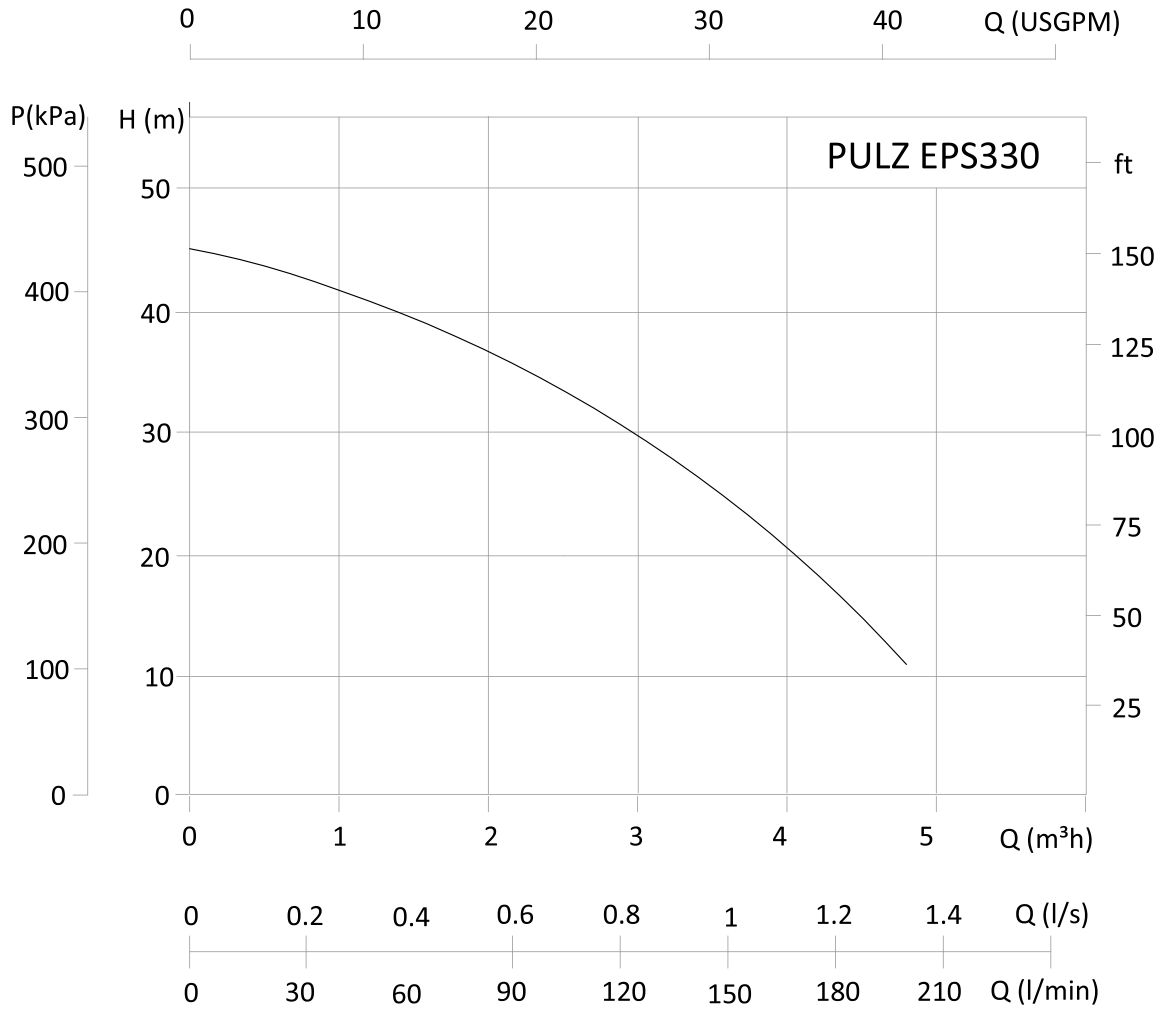
- IEC 60335, IEC 60334, CEI 2-3, CEI 61-69



CERTIFICATIONS

- ISO 9001:2015
- ISO 14001:2015

PERFORMANCE RANGE



Note: the performance curves are based on a kinetic viscosity of 1mm²/s and density of 1000 kg/m³ and curve tolerance: ISO 9906:2021 3B

MODEL	POWER (P2)	Q	m ³ /h	0	0.6	1.2	1.8	2.4	3	3.6	4.2	4.8
	kW			l/min	0	10	20	30	40	50	60	70
PULZ EPS330	0.55	H	meter	45	43	41	38	34	30	25	18	11

Q= Flow Rate H= Total manometric head

PACKING AND WEIGHT

MODEL	PORTS/ CONNECTIONS		PRODUCT PACKING & WEIGHT DATA			
	DNA	DNM	SIZE OF CTN* (LXWXH)	PCS/CTN	NW* OF CTN (KGS)	GW* OF CTN (KGS)
PULZ EPS330	G1"	G1"	450 X 365 X 245	1	9	11

Abbreviations: CTN: Carton, PCS: Pieces, GW: Gross Weight, KGS: Kilograms
Euro Pallet Size: 1200mm×800mm

VERTICAL MULTISTAGE CENTRIFUGAL PUMP

VMW Series



FEATURES

- Vertical multistage non-self-priming centrifugal pump.
- Inlet and outlet port of the pump are in-line.
- Excellent corrosion resistance by stainless-steel casing and impeller.
- Designed for Continuous Operation.
- Wide performance range.
- Can adopt to smart controls integration Energy efficient for a longer period.

APPLICATIONS

- Domestic water supply and pressure boosting
- Heating and cooling for industrial process
- Water treatment systems
- Irrigation system

MATERIALS OF CONSTRUCTION

- Pump Body Casing: Stainless Steel, AISI 304 / AISI 316
- Impeller: Stainless Steel, AISI 304 / AISI 316
- Shaft: Stainless Steel, AISI 304 / AISI 316
- Mechanical Seal: Silicon carbide / Carbon
- O-ring: Viton

MOTOR

- Totally Enclosed Fan Cooled induction motor with oversized Greased-for-life ball bearings.
- Inbuilt thermal overload protection.
- Degree of protection: IP55, Insulation Class: F
- Suitable for power supply: AC, 50Hz, single Phase (220-240V)/Three phase(380-415V)

OPERATING LIMITS

- Maximum working pressure: 33 bar (depending on the model)
- Minimum & Maximum Liquid temperature: -20 to +104°C.
- Maximum Ambient Temperature: Up to +50° C.
- Service/Duty type: **S1** (Continuous)

APPLICABLE DESIGN STANDARDS

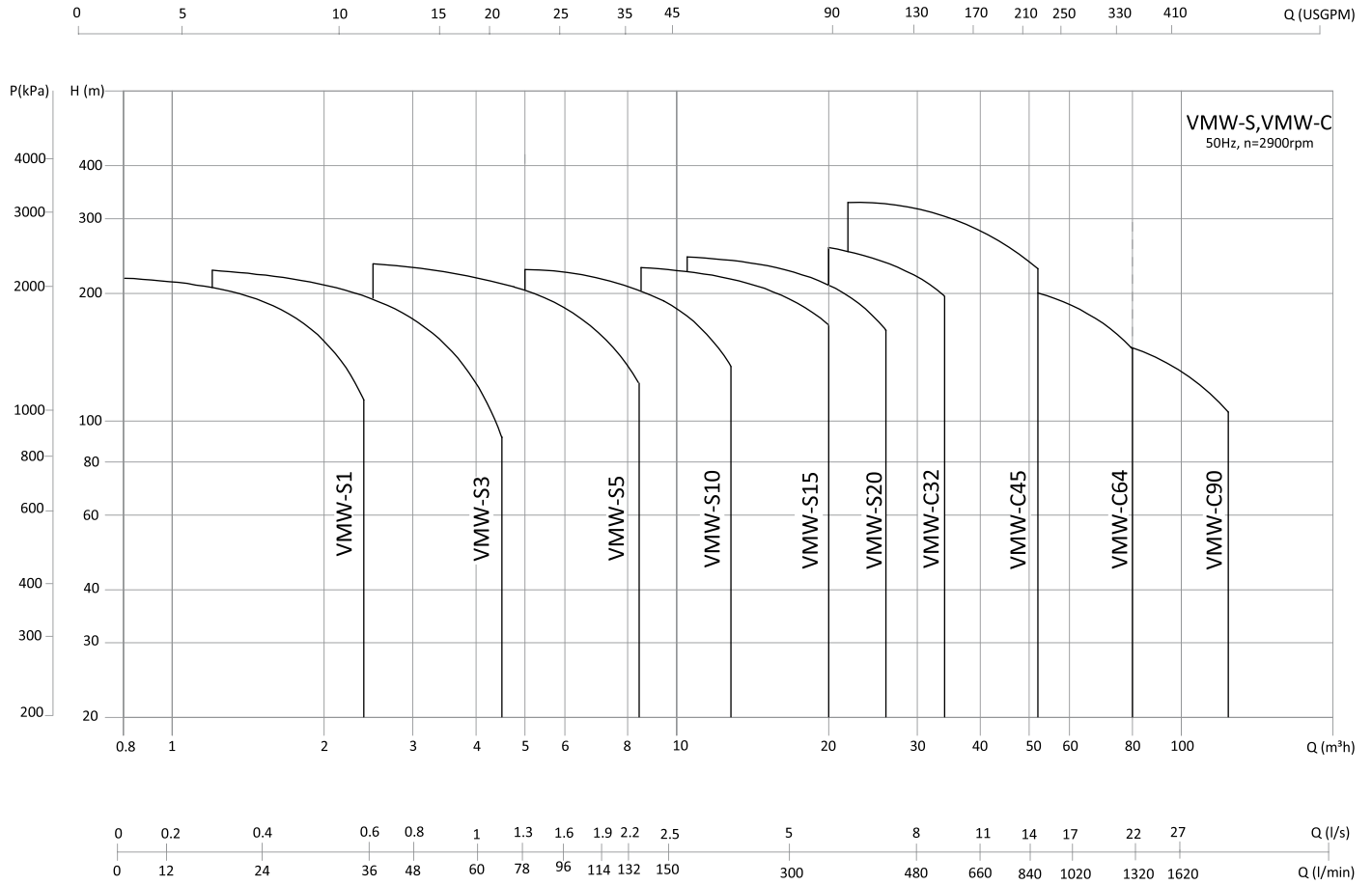
- IEC 60335, IEC 60334, CEI 2-3, CEI 61-69



CERTIFICATIONS

- ISO 9001:2015
- ISO 14001:2015

PERFORMANCE RANGE



PERIPHERAL PUMPS

PKW Series



FEATURES

- Robust and Compact. High Grade Brass insert reduces the chances of impeller seizure.
- Silent and maintenance free operation. Inbuilt thermal Overload protection.
- Dynamically Balanced High Grade Brass impeller for durability and consistent performance.
- Designed for Continuous operation.
- Energy efficient for longer period.
- Excellent suction lift characteristics.
- Can adopt to smart controls integration Energy efficient for longer period.
- Excellent suction lift characteristics.
- Can adopt to smart controls integration.

APPLICATIONS

- Domestic water supply and pressure boosting
- Gardening/orchards irrigation
- Pressure washing
- Rainwater utilisation/harvesting and light industrial use

MATERIALS OF CONSTRUCTION

- Pump Body Casing: Grey Cast Iron, 250 UNI ISO 185/EN-GJL 250 with Brass insert
- Impeller: Forged Brass, PCu Zn 40 Pb2 5705-65
- Shaft: Stainless Steel, AISI 304
- Mechanical Shaft Seal: Carbon (Graphite) /Ceramic
- O ring: NBR Rubber
- Motor Frame: Aluminium Alloy

MOTOR

- Totally Enclosed Fan Cooled induction motor with oversized Greased-for-life ball bearings, inbuilt thermal overload protection, permanently switched-on capacitor (permanent split capacitor type, PSG).
- Designed for continuous operation/duty class **S1**
- Direction of Rotation: Clockwise viewed from driving End
- Degree of protection: IP55, Insulation Class: F
- Suitable for power supply: AC, 50Hz, single Phase (220-240V)/Three phase(380-415V)

OPERATING LIMITS

- Maximum working pressure: PKW50 & PKW75- 6 bar, PKW100- 8 bar.
- Minimum & Maximum Liquid temperature: -10 to +90°C.
- Maximum Ambient Temperature: Up to +50° C.
- Manometric suction lift/head up to 8 metres.
- Service/Duty type: **S1** (Continuous)

APPLICABLE DESIGN STANDARDS

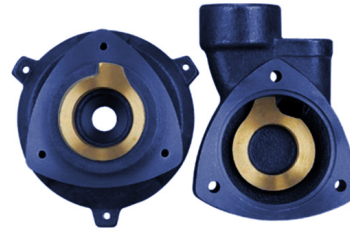
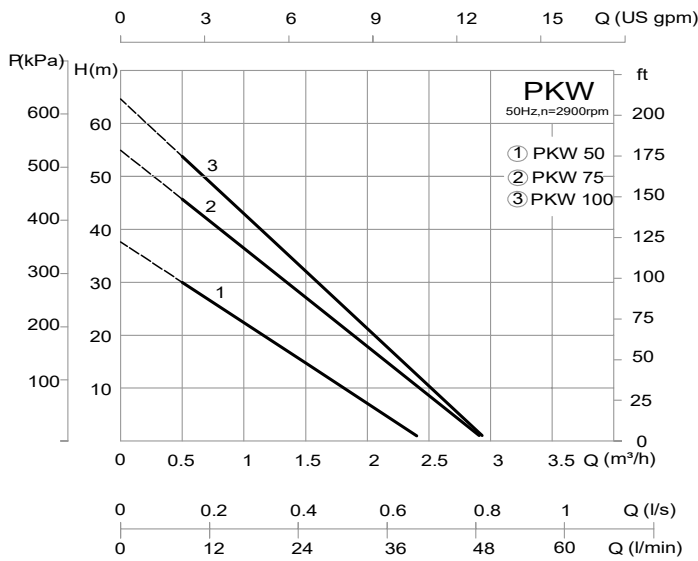
- IEC 60034, IEC 60335, CEI 2-3, CEI 61-69



CERTIFICATIONS

- ISO 9001:2015
- ISO 14001:2015

PERFORMANCE RANGE



High Grade Brass Insert reduces chances of impeller seizure.

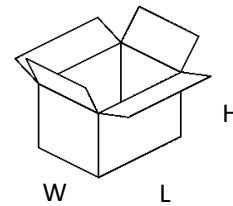
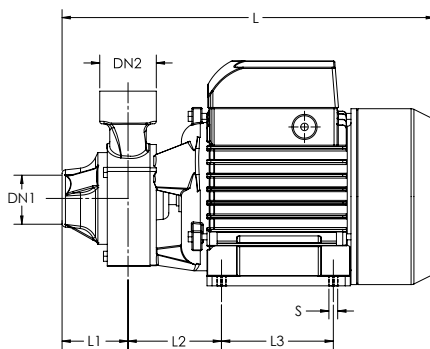
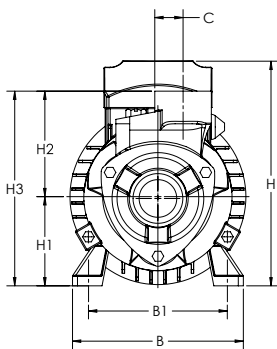
Note: the performance curves are based on a kinetic viscosity of 1mm²/s and density of 1000 kg/m³ and curve tolerance: EN ISO 9906:2021 3B

MODEL		POWER (P2)		Q	Q												
Single Phase	Three phase	kW	HP		m ³ /h	0	0.3	0.6	0.9	1.2	1.5	1.8	2.1	2.4	2.7		
					l/min	0	5	10	15	20	25	30	35	40	45		
PKW 50	PKW 50T	0.37	0.5	H	meter	38	33	29	24	20	15	11	7	2			
PKW 75	PKW 75T	0.55	0.75			55	49	43	37	31	25	19	13	8	1		
PKW 100	PKW 100T	0.75	1			65	58	51	44	38	31	24	17	11	2		

Q= Flow Rate H= Total manometric head
Note: TOLERANCE AS PER ISO 2768 (+/-2.5mm)

*Three phase models available on request.

DIMENSIONS AND WEIGHT

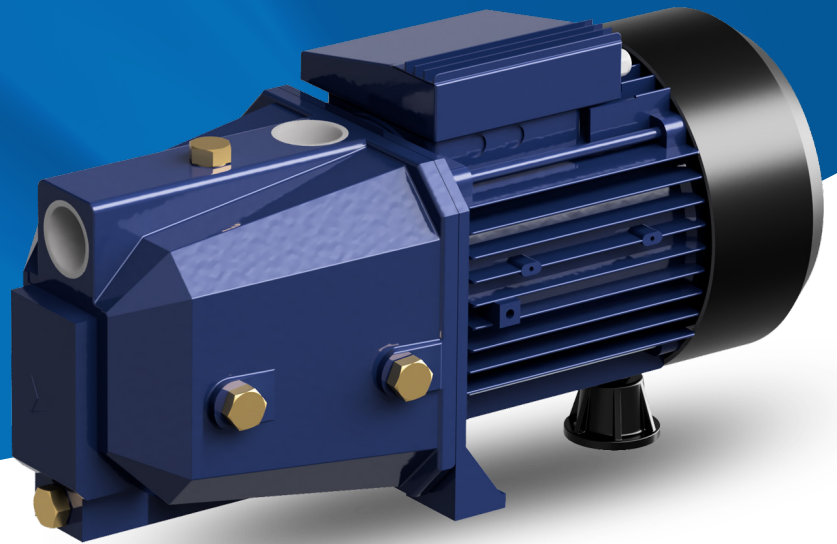


MODEL	PORTS/ CONNECTIONS		PRODUCTS DIMENSIONS & WEIGHT DATA															
	DN1	DN2	B	B1	H	H1	H2	H3	L	L1	L2	L3	C	S	SIZE OF CTN (LXWXH) (CMS)	PCS/CTN	PCS/EURO PALLET	GROSS WEIGHT (KG)
Single Phase																		
PKW 50	1"	1"	119	100	146	56	76	132	209	38	54	55	21	8	24X14.5X18	1	60	6.5
PKW 75	1"	1"	121	100	154	63		139	238			80			31.5X18.5X22	1	60	10
PKW 100	1"	1"	141	112	180	71	86	157	286	55	63	90			34X20X24	1	60	15

Abbreviations: CTN: Carton, CMS: Centimetres, PCS: Pieces, GW: Gross Weight KGS: Kilograms
Euro Pallet Size: 1200mmx800mm

SELF-PRIMING JET PUMP

JPCW1 Series



FEATURES

- Close coupled single stage Self-priming jet pump with built-in ejector system.
- Axial inlet port, radial outlet port.
- Robust and Compact design.
- Excellent suction lift characteristics
- Designed for Continuous Operation.

APPLICATIONS

- Domestic water supply and transfer
- Garden irrigation systems
- Light industrial use
- Emptying of tanks

MATERIALS OF CONSTRUCTION

- Pump Body: Cast Iron
- Impeller: Brass
- Shaft: Stainless steel, AISI 304
- Motor casing: Aluminium

MOTOR

- Totally Enclosed Fan Cooled induction motor with oversized Greased-for-life ball bearings.
- Inbuilt thermal overload protection.
- Degree of protection: IP44, Insulation Class: F
- Suitable for power supply: AC, 50Hz, single Phase (220-240V)

OPERATING LIMITS

- Maximum working pressure: 8 bar
- Maximum Liquid temperature: Up to +50°C.
- Maximum Ambient Temperature: Up to +50° C.
- Manometric suction lift/head up to 9 meters.
- Service/Duty type: **S1** (Continuous)

APPLICABLE DESIGN STANDARDS

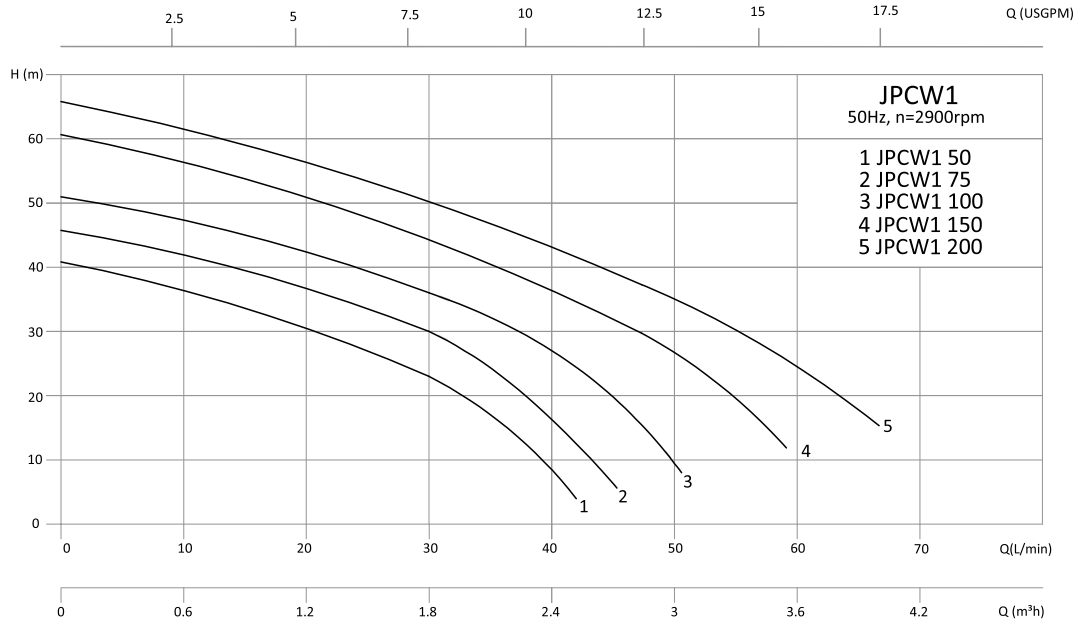
- IEC 60335, IEC 60334, CEI 2-3, CEI 61-69



CERTIFICATIONS

- ISO 9001:2015
- ISO 14001:2015

PERFORMANCE RANGE



Note: the performance curves are based on a kinetic viscosity of 1mm²/s and density of 1000 kg/m³ and curve tolerance: ISO 9906:2021 3B

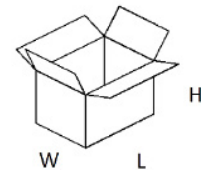
MODEL		POWER (P2)		Q	Q									
Single Phase	Three Phase	kW	HP		m ³ /h	0	0.6	1.2	1.8	2.4	3	3.6	4.2	
					l/min	0	10	20	30	40	50	60	70	
JPCW1 50	JPCW1 50 T	0.37	0.5	H	meter	41	37	30	23	9				
JPCW1 75	JPCW1 75 T	0.55	0.75			46	41	36	30	16				
JPCW1 100	JPCW1 100 T	0.75	1			51	48	42	36	27	10			
JPCW1 150	JPCW1 150 T	1.1	1.5			60	57	51	45	36	28	10		
JPCW1 200	JPCW1 200 T	1.5	2			65	61	57	50	43	35	25	10	

Q= Flow Rate

H= Total manometric head

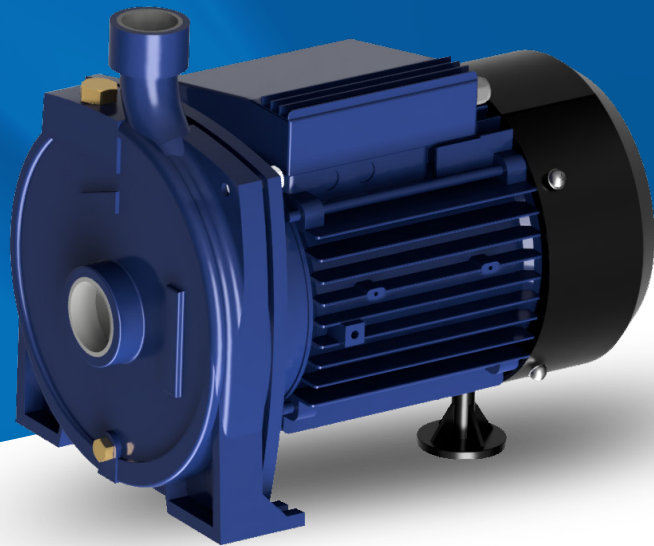
*Three phase models available on request

PACKING AND WEIGHT



MODEL		PORTS/ CONNECTIONS		PRODUCT PACKING & WEIGHT DATA		
Single Phase	Three Phase	DNA	DNM	SIZE OF CTN* (LXWXH)	PCS/CTN	NW* OF CTN (KGS)
JPCW1 50	JPCW1 50 T	G1"	G1"	460 X 210 X 230	1	14
JPCW1 75	JPCW1 75 T	G1"	G1"	460 X 210 X 230	1	15
JPCW1 100	JPCW1 100 T	G1"	G1"	460 X 210 X 230	1	16
JPCW1 150	JPCW1 150 T	G1 1/2"	G1 1/4"	520 X 235 X 270	1	26
JPCW1 200	JPCW1 200 T	G1 1/2"	G1 1/4"	520 X 235 X 270	1	27

Abbreviations: CTN: Carton, PCS: Pieces, GW: Gross Weight, KGS: Kilograms
Euro Pallet Size: 1200mm×800mm



CENTRIFUGAL PUMP

CCW1 Series

FEATURES

- Close coupled single impeller centrifugal pump.
- Axial inlet port, radial outlet port.
- Robust and Compact design.
- Designed for Continuous Operation.
- Can adopt to smart controls integration Energy efficient for a longer period.

APPLICATIONS

- Domestic water transfer and pressure boosting
- Garden irrigation systems
- Civil and industrial use
- Water circulation

MATERIALS OF CONSTRUCTION

- Pump Body: Cast Iron
- Impeller: Brass
- Shaft: Stainless steel, AISI 304
- Motor casing: Aluminium

MOTOR

- Totally Enclosed Fan Cooled induction motor with oversized Greased-for-life ball bearings.
- Inbuilt thermal overload protection.
- Degree of protection: IP44, Insulation Class: F
- Suitable for power supply: AC, 50Hz, single Phase (220-240V)

OPERATING LIMITS

- Maximum working pressure: 8 bar
- Maximum Liquid temperature: Up to +90°C.
- Maximum Ambient Temperature: Up to +50° C.
- Service/Duty type: **S1** (Continuous)

APPLICABLE DESIGN STANDARDS

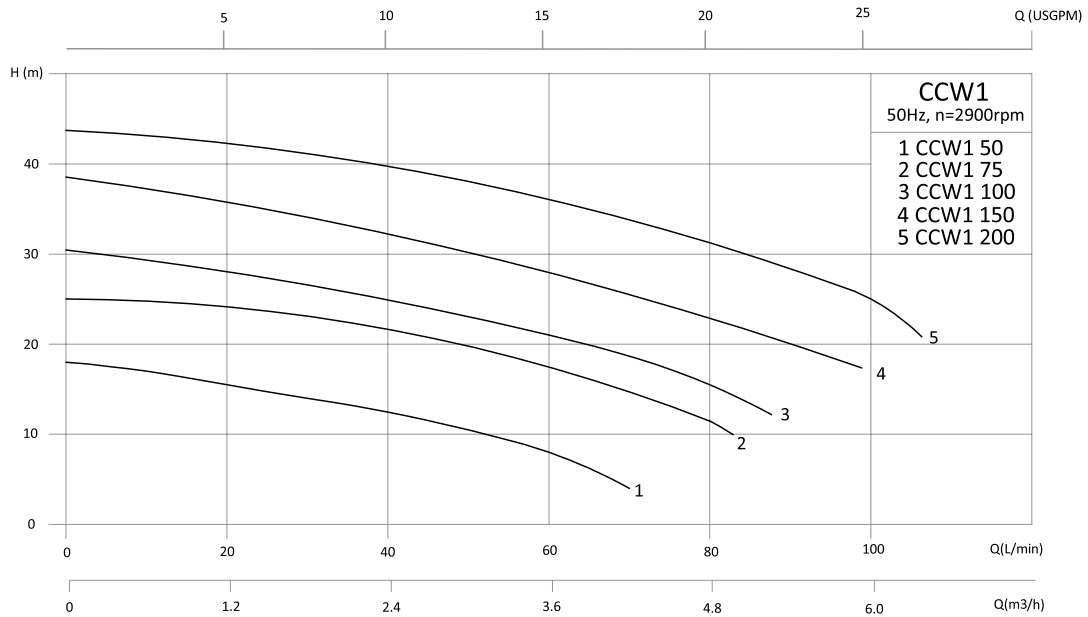
- IEC 60335, IEC 60334, CEI 2-3, CEI 61-69



CERTIFICATIONS

- ISO 9001:2015
- ISO 14001:2015

PERFORMANCE RANGE



Note: the performance curves are based on a kinetic viscosity of 1mm²/s and density of 1000 kg/m³ and curve tolerance: ISO 9906:2021 3B

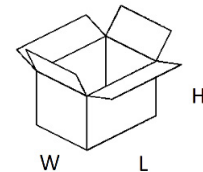
MODEL		POWER (P2)		Q	m ³ /h						
Single Phase	Three Phase	kW	HP		0	1.2	2.4	3.6	4.8	6	
					0	20	40	60	80	100	
				H	meter	18	16	13	8		
						25	23	21	18	11	
						30	28	25	21	16	
						39	36	32	28	23	18
						44	42	40	36	31	25

Q= Flow Rate

H= Total manometric head

*Three phase models available on request

PACKING AND WEIGHT

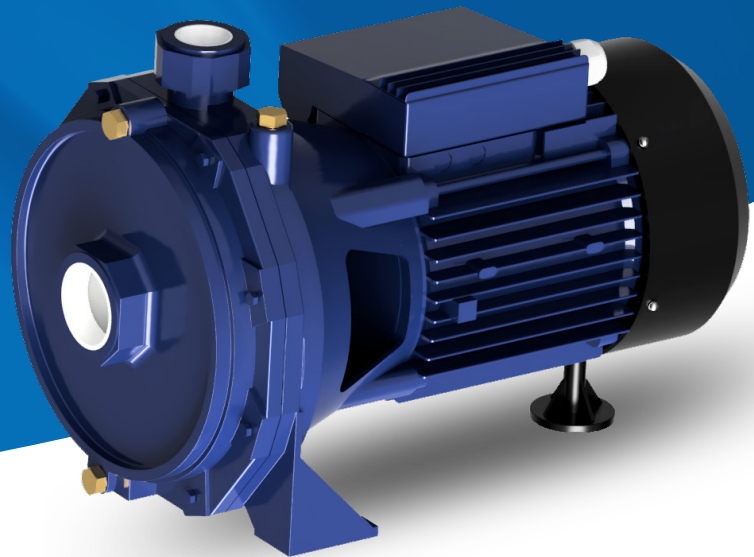


MODEL		PORTS/ CONNECTIONS		PRODUCT PACKING & WEIGHT DATA		
Single Phase	Three Phase	DNA	DNM	SIZE OF CTN* (LXWXH)	PCS/CTN	GW* OF CTN (KGS)
CCW1 50	CCW1 50 T	G1"	G1"	295 X 175 X 240	1	9
CCW1 75	CCW1 75 T	G1"	G1"	345 X 210 X 265	1	13
CCW1 100	CCW1 100 T	G1"	G1"	345 X 210 X 265	1	14
CCW1 150	CCW1 150 T	G1"	G1"	408 X 265 X 340	1	19
CCW1 200	CCW1 200 T	G1"	G1"	410 X 265 X 340	1	20

Abbreviations: CTN: Carton, PCS: Pieces, GW: Gross Weight, KGS: Kilograms
Euro Pallet Size: 1200mmx800mm

TWIN IMPELLER CENTRIFUGAL PUMP

2CCW1 Series



FEATURES

- Close coupled twin impeller centrifugal pump.
- Axial inlet port, radial outlet port.
- Robust and Compact design.
- Designed for Continuous Operation.
- Can adopt to smart controls integration Energy efficient for a longer period.

APPLICATIONS

- Domestic water transfer and pressure boosting
- Garden irrigation systems
- Civil and industrial use
- Water circulation

MATERIALS OF CONSTRUCTION

- Pump Body: Cast Iron
- Impeller: Brass
- Shaft: Stainless steel, AISI 304
- Motor casing: Aluminium

MOTOR

- Totally Enclosed Fan Cooled induction motor with oversized Greased-for-life ball bearings.
- Inbuilt thermal overload protection.
- Degree of protection: IP44, Insulation Class: F
- Suitable for power supply: AC, 50Hz, single Phase (220-240V)

OPERATING LIMITS

- Maximum working pressure: 10 bar
- Maximum Liquid temperature: Up to +90°C.
- Maximum Ambient Temperature: Up to +50° C.
- Service/Duty type: **S1** (Continuous)

APPLICABLE DESIGN STANDARDS

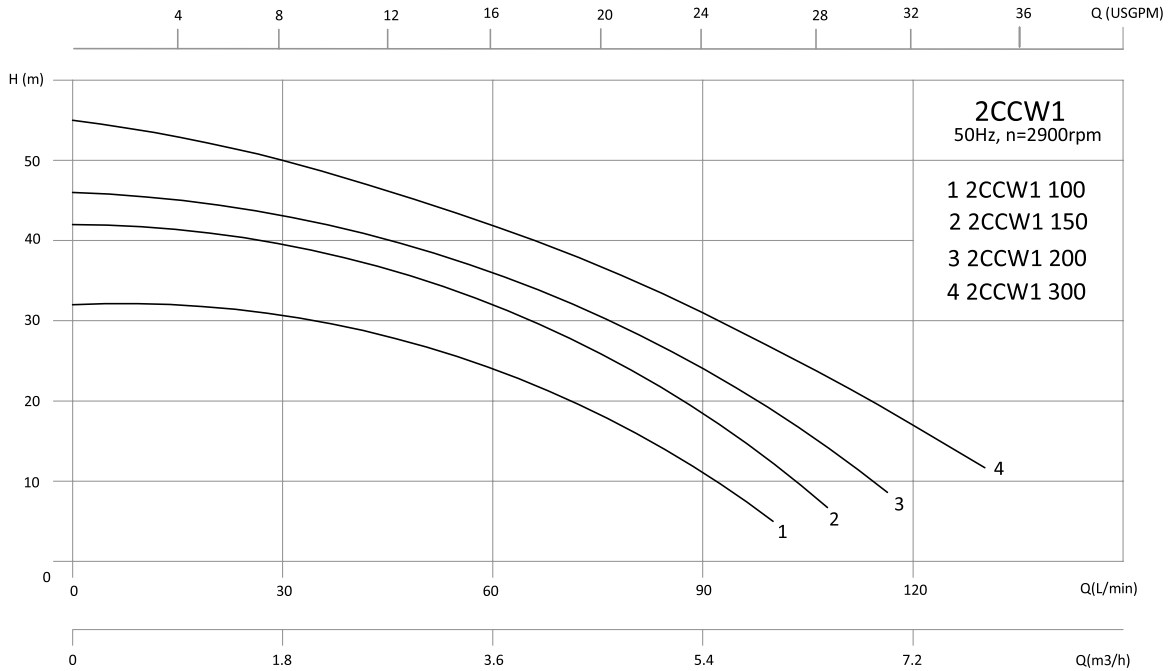
- IEC 60335, IEC 60334, CEI 2-3, CEI 61-69



CERTIFICATIONS

- ISO 9001:2015
- ISO 14001:2015

PERFORMANCE RANGE



Note: the performance curves are based on a kinetic viscosity of 1mm²/s and density of 1000 kg/m³ and curve tolerance: ISO 9906:2021 3B

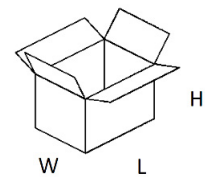
MODEL		POWER (P2)		Q	m ³ /h	0	1.8	3.6	5.4	7.2
Single Phase	Three Phase	kW	HP							
2CCW1 100	2CCW1 100 T	0.75	1	H	meter	0	30	60	90	120
2CCW1 150	2CCW1 150 T	1.1	1.5			32	30	24	11	
2CCW1 200	2CCW1 200 T	1.5	2			41	39	32	18	
2CCW1 300	2CCW1 300 T	2.2	3			46	43	36	24	8
						55	50	42	31	18

Q= Flow Rate

H= Total manometric head

*Three phase models available on request

PACKING AND WEIGHT



MODEL		PORTS/ CONNECTIONS		PRODUCT PACKING & WEIGHT DATA		
Single Phase	Three Phase	DNA	DNM	SIZE OF CTN* (LXWXH)	PCS/CTN	GW* OF CTN (KGS)
2CCW1 100	2CCW1 100 T	G1 1/4"	G1"	360 X 200 X 250	1	18
2CCW1 150	2CCW1 150 T	G1 1/4"	G1"	420 X 230 X 280	1	22
2CCW1 200	2CCW1 200 T	G1 1/4"	G1"	420 X 230 X 290	1	25
2CCW1 300	2CCW1 300 T	G1 1/5"	G1 1/4"	420 X 230 X 290	1	26

Abbreviations: CTN: Carton, PCS: Pieces, GW: Gross Weight, KGS: Kilograms
Euro Pallet Size: 1200mm×800mm

CENTRIFUGAL SINGLE STAGE POOL PUMP

WINPOOL PPW1 Series



FEATURES

- Centrifugal single stage self-priming pump.
- Axial inlet port, radial outlet port.
- Built in filter
- Robust and Compact design.
- Low noise, high reliability, wide performance range.
- Designed for Continuous Operation.

APPLICATIONS

- Water recirculation and filtration for swimming pools
- Mariculture circulation filter

MATERIALS OF CONSTRUCTION

- Pump Body: Technopolymer
- Impeller: Technopolymer
- Diffuser: Technopolymer
- Suction & Discharge: Technopolymer
- Shaft: Stainless steel
- Motor casing: Aluminium

MOTOR

- Totally Enclosed Fan Cooled induction motor with oversized Greased-for-life ball bearings,
- Inbuilt thermal overload protection.
- Degree of protection: IP55, Insulation Class: F
- Suitable for power supply: AC, 50Hz, single Phase (220-240V)

OPERATING LIMITS

- Maximum working pressure: 3 bar
- Minimum & Maximum Liquid temperature: 5 to +50°C.
- Maximum Ambient Temperature: Up to +50° C.
- Service/Duty type: **S1** (Continuous)

APPLICABLE DESIGN STANDARDS

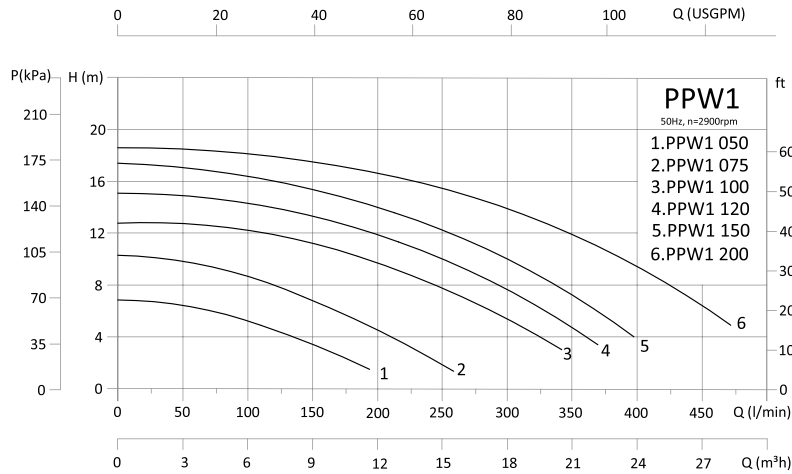
- IEC 60335, IEC 60334, CEI 2-3, CEI 61-69



CERTIFICATIONS

- ISO 9001:2015
- ISO 14001:2015

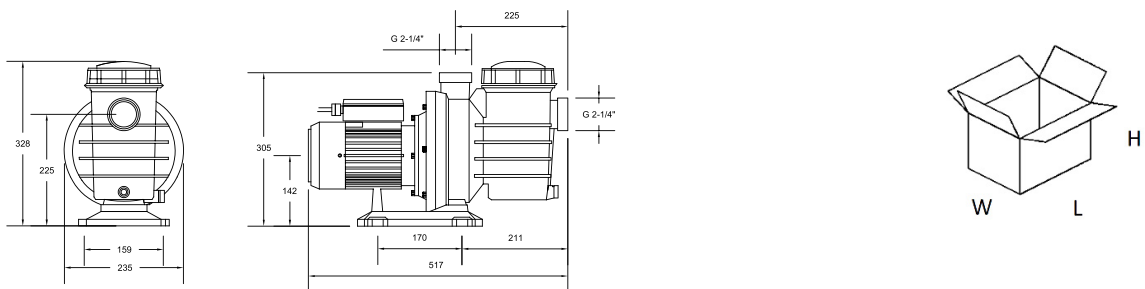
PERFORMANCE RANGE



Note: the performance curves are based on a kinetic viscosity of 1mm²/s and density of 1000 kg/m³ and curve tolerance: ISO 9906:2021 3B

MODEL	POWER (P1)		Flow Q max	Head H max
	kW	HP	l/min	m
PPW1 050	0.37	0.5	200	7.5
PPW1 075	0.55	0.75	260	10.5
PPW1 100	0.75	1	345	13
PPW1 120	0.9	1.2	375	15.5
PPW1 150	1.1	1.5	395	18
PPW1 200	1.5	2	475	19

PACKING AND WEIGHT



MODEL	PORTS/ CONNECTIONS		PRODUCTS DIMENSIONS & WEIGHT DATA		
	DN1	DN2	SIZE OF CTN* (LXWXH)	PCS/CTN	GW* OF CTN (KGS)
PPW1 050	G2 1/4"	G2 1/4"	560 x 275 x 390	1	9.3
PPW1 075	G2 1/4"	G2 1/4"	560 x 275 x 390	1	9.5
PPW1 100	G2 1/4"	G2 1/4"	560 x 275 x 390	1	9.7
PPW1 120	G2 1/4"	G2 1/4"	560 x 275 x 390	1	10.5
PPW1 150	G2 1/4"	G2 1/4"	560 x 275 x 390	1	10.9
PPW1 200	G2 1/4"	G2 1/4"	560 x 275 x 390	1	11.5

Abbreviations: CTN: Carton, PCS: Pieces, GW: Gross Weight, KGS: Kilograms
Euro Pallet Size: 1200mmx800mm

NOTE: Whilst all reasonable care has been taken in compiling the information in this document, the designs, dimensions, specifications, weights photos shown are indicative only and non binding. These data should not be relied upon without our prior written approval. Due to our policy of continuous development, we reserve the right to modify/discontinue the design, construction or appearance of goods mentioned in this document, website and any other publication including installation manuals, price lists any time without notice and without re-course. Project pictures, product models, certifications and approvals shown may also be of the similar product but sold under other brand. All products are not available in every country. Copy, reprinting and photo-mechanical re-production, also in extracts is forbidden without our written agreement.

EAU TECHNIK GmbH

Frankfurt, Germany
Email : info@eautek.com
Web : www.eautek.com

Bangalore, India,
Shanghai, China,
Dubai, UAE