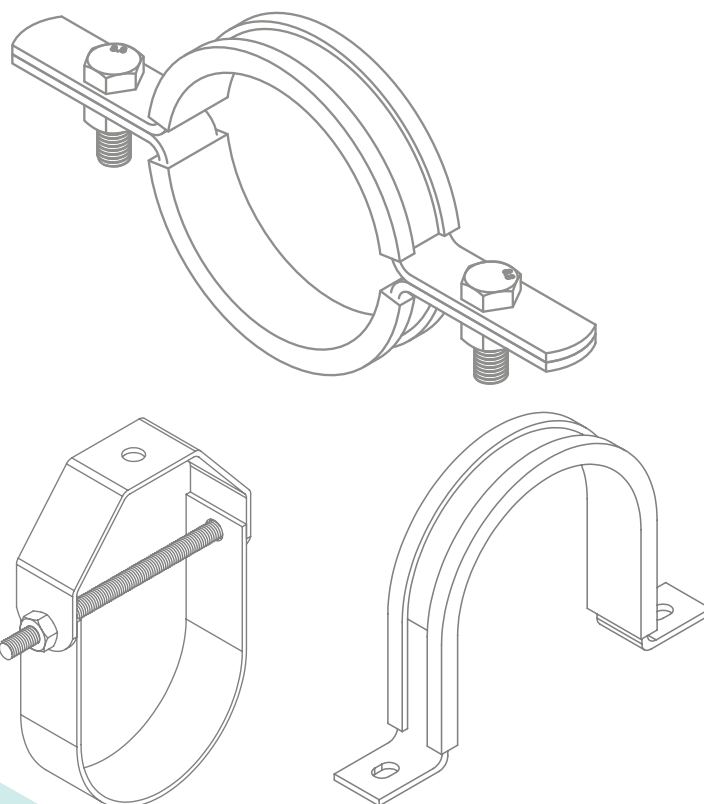


Pipe Hangers and Support Systems



Product
Catalogue

www.eautek.com



Pipe Support
Products

Index

Pipe Hangers

Lined Split Clamp	4
Unlined Split Clamp	5
Unlined Clevis Hanger	6
Lined Clevis Hanger	7
Unlined Sprinkler Hanger	8
Lined U Strap	9
Unlined U Strap	10
Lined Riser Hanger	11
Unlined Riser Hanger	12
Unlined U Bolt	13
Lined U-Bolt	14
Rubber Support Insert	15
Beam Clamp	16

Lined Split Clamp Series 01

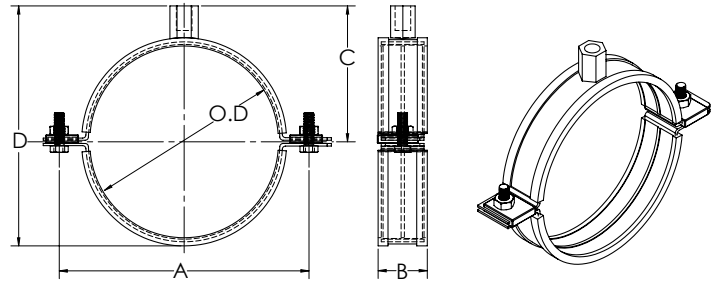


Material: Mild Steel with EPDM rubber lining

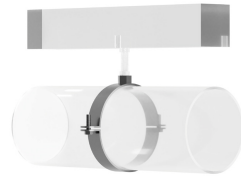
Finish: Electro galvanized zinc plated as per ASTM B 633 standard

Features and Benefits

- High rigidity due to reinforcing rib.
- Elastic lining provides noise and vibration absorption control.
- Suitable for horizontal and vertical applications.
- Heat resistant rubber up to 120° C.
- Dual tapped M8/M10 boss for hanger rod.
- Includes screws with anti-loss washer



Part Number	Nominal Pipe Size		Pipe O.D. (mm)	Clamping Range (mm) *	Dimensions (mm)				Connection	Max. Load (Kg)**
	Inch	DN (mm)			A	B	C	D		
620101 017	3/8	10	17.1	15 - 19	59	20	23	30	M8/M10	450
620101 021	1/2	15	21.3	20 - 25	66	20	26	37	M8/M10	450
620101 027	3/4	20	26.7	26 - 30	72	20	29	43	M8/M10	450
620101 033	1	25	33.4	32 - 36	79	20	33	50	M8/M10	450
620101 042	1 1/4	32	42.1	38 - 43	86	20	36	57	M8/M10	450
620101 048	1 1/2	40	48.2	47 - 51	92	20	39	63	M8/M10	450
620101 054	-	-	54.0	53 - 58	98	20	42	69	M8/M10	450
620101 060	2	50	60.3	60 - 64	104	20	45	75	M8/M10	450
620101 063	-	-	63.0	63 - 66	108	20	47	72	M8/M10	450
620101 070	-	-	70.0	68 - 72	114	20	50	85	M8/M10	450
620101 073	2 1/2	65	73.0	74 - 80	119	20	53	90	M8/M10	600
620101 083	-	-	83.0	81 - 86	127	20	57	98	M8/M10	600
620101 089	3	80	88.9	87 - 92	134	20	60	105	M8/M10	600
620101 102	3 1/2	-	101.6	99 - 105	144	20	65	115	M8/M10	600
620101 110	-	-	110.0	107 - 112	164	20	70	125	M8/M10	600
620101 114	4	100	114.3	113 - 118	159	20	73	130	M8/M10	600
620101 125	-	-	125.0	122 - 132	169	20	78	140	M8/M10	600
620101 133	-	-	133.0	131 - 141	177	20	82	148	M8/M10	600
620101 141	5	125	141.3	133 - 143	184	20	85	155	M8/M10	600
620101 150	-	-	150.0	148 - 153	194	20	90	165	M8/M10	600
620101 160	-	-	160.0	159 - 166	204	25	95	175	M8/M10	600
620101 168	6	150	168.3	168 - 172	212	25	99	183	M8/M10	600
620101 210	-	-	210.0	200 - 212	244	25	115	215	M8/M10	950
620101 219	8	200	219.1	215 - 220	264	25	125	235	M8/M10	950
620101 273	10	250	273.0	269 - 274	294	25	140	265	M8/M10	950
620101 324	12	300	323.8	313 - 318	367	25	177	339	M8/M10	1200

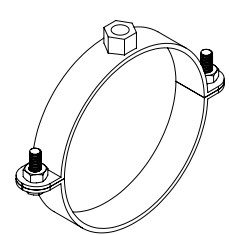
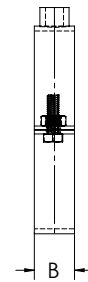
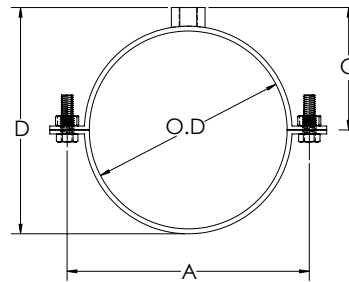


Material: Mild Steel

Finish: Electro galvanized zinc plated as per ASTM B 633 standard

Features and Benefits

- Suitable for horizontal and vertical applications.
- Dual tapped M8/M10 boss for hanger rod.
- Suitable for temperatures of up to 343° C (650° F).
- Includes screws with anti-loss washer



Product Code	Nominal Pipe Size		Pipe OD (mm)	Clamping Range (mm) *	Dimensions (mm)				Max. Load (Kg)**
	Inch	DN (mm)			A	B	C	D	
620201 017	3/8	10	17.1	15 - 19	59	20	23	30	450
620201 021	1/2	15	21.3	20 - 25	66	20	26	37	450
620201 027	3/4	20	26.7	26 - 30	72	20	29	43	450
620201 033	1	25	33.4	32 - 36	79	20	33	50	450
620201 042	1 1/4	32	42.1	38 - 43	86	20	36	57	450
620201 048	1 1/2	40	48.2	47 - 51	92	20	39	63	450
620201 054	-	-	54.0	53 - 58	98	20	42	69	450
620201 060	2	50	60.3	60 - 64	104	20	45	75	450
620201 067	-	-	63.0	63 - 66	108	20	47	72	450
620201 070	-	-	70.0	68 - 72	114	20	50	85	450
620201 073	2 1/2	65	73.0	74 - 80	119	20	53	90	600
620201 083	-	-	83.0	81 - 86	127	20	57	98	600
620201 089	3	80	88.9	87 - 92	134	20	60	105	600
620201 102	3 1/2	-	101.6	99 - 105	144	20	65	115	600
620201 110	-	-	110.0	107 - 112	164	20	70	125	600
620201 114	4	100	114.3	113 - 118	159	20	73	130	600
620201 125	-	-	125.0	122 - 132	169	20	78	140	600
620201 133	-	-	133.0	131 - 141	177	20	82	148	600
620201 141	5	125	141.3	133 - 143	184	20	85	155	600
620201 150	-	-	150.0	148 - 153	194	20	90	165	600
620201 160	-	-	160.0	159 - 166	204	25	95	175	600
620201 168	6	150	168.3	168 - 172	212	25	99	183	600
620201 210	-	-	210.0	200 - 212	244	25	115	215	950
620201 219	8	200	219.1	215 - 220	264	25	125	235	950
620201 273	10	250	273.0	269 - 274	294	25	140	265	950
620201 324	12	300	323.8	313 - 318	367	25	177	339	1200

* Measured for pipe outer diameter. **Break Load Measurements are subject to 5% tolerance.

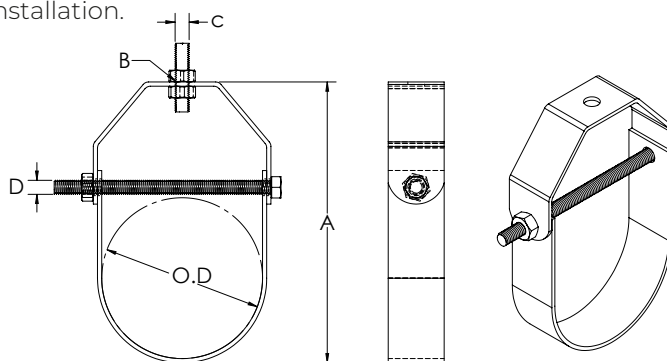
Unlined Clevis Hanger Series 01



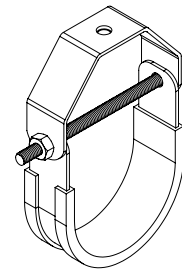
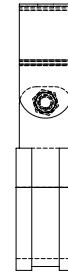
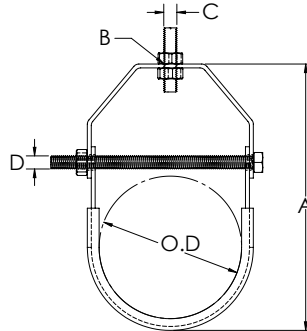
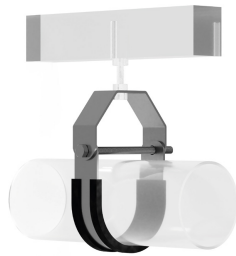
Material: Mild Steel with EPDM rubber lining
Finish: Electro galvanized zinc plated as per ASTM B 633 standard.

Features and Benefits

- Rated for maximum temperature of 650° F (343° C).
- Suitable for suspension of non-insulated pipes or insulated pipes with a support insert.
- Easy alignment of bolt holes allows for a quick overhead installation.



Product Code	Nominal Pipe Size		Pipe O.D. (mm)	Dimensions (mm)				Max. Load (Kg)*
	Inch	DN (mm)		Height A	Top Hole Dia. B	Hanger Rod Dia. C	Cross Bolt Dia. D	
620501 021	½	15	21.3	68.0	11.0	M10		350
620501 027	¾	20	26.7	72.0	11.0	M10	M8	350
620501 033	1	25	33.4	76.0	11.0	M10	M8	350
620501 042	1 ¼	32	42.1	87.0	11.0	M10	M8	350
620501 048	1 ½	40	48.2	97.0	11.0	M10	M8	350
620501 060	2	50	60.3	114.0	11.0	M10	M8	350
620501 073	2 ½	65	73.0	142.0	13.0	M12	M10	780
620501 089	3	80	88.9	165.0	13.0	M12	M10	780
620501 114	4	100	114.3	202.0	13.0	M12	M10	780
620501 141	5	125	141.3	236.0	13.0	M12	M12	1250
620501 168	6	150	168.3	278.0	13.0	M12	M12	1250
620501 219	8	200	219.1	338.0	13.0	M12	M12	2100
620501 273	10	250	273.0	419.0	17.0	M16	M16	2100
620501 324	12	300	323.8	490.0	21.0	M20	M20	2100
620501 356	14	350	355.6	556.0	21.0	M20	M20	3800
620501 406	16	400	406.4	610.0	25.0	M24	M20	3800
620501 457	18	450	457.2	675.0	25.0	M24	M24	4000
620501 508	20	500	508.0	715.0	32.0	M30	M24	4000
620501 610	24	600	609.6	850.0	32.0	M30	M24	9400
620501 762	30	750	762.0	995.0	32.0	M30	M24	9400



Material: Mild Steel with EPDM lining

Finish: Electro galvanized zinc plating as per ASTM B 633

Features and Benefits

- EPDM rated for maximum temperature of 120° C.
- Lining provides noise and vibration absorption.
- Suitable for suspension chiller water pipe work and firefighting systems.
- Easy alignment of bolt holes allows for a quick overhead installation.

Product Code	Nominal Pipe Size		Pipe O.D. (mm)	Dimensions (mm)				Max. Load (Kg)*
	Inch	DN (mm)		Height A	Top Hole Dia. B	Hanger Rod Dia. C	Cross Bolt Dia. D	
620601 021	½	15	21.3	68.0	11.0	M10	M8	350
620601 027	¾	20	26.7	72.0	11.0	M10	M8	350
620601 033	1	25	33.4	76.0	11.0	M10	M8	350
620601 042	1 ¼	32	42.1	87.0	11.0	M10	M8	350
620601 048	1 ½	40	48.2	97.0	11.0	M10	M8	350
620601 060	2	50	60.3	114.0	11.0	M10	M8	350
620601 073	2 ½	65	73.0	142.0	13.0	M12	M10	780
620601 089	3	80	88.9	165.0	13.0	M12	M10	780
620601 114	4	100	114.3	202.0	13.0	M12	M10	780
620601 141	5	125	141.3	236.0	13.0	M12	M12	1250
620601 168	6	150	168.3	278.0	13.0	M12	M12	1250
620601 219	8	200	219.1	338.0	13.0	M12	M12	2100
620601 273	10	250	273.0	419.0	17.0	M16	M16	2100
620601 324	12	300	323.8	490.0	21.0	M20	M20	2100
620601 356	14	350	355.6	556.0	21.0	M20	M20	3800
620601 406	16	400	406.4	610.0	25.0	M24	M20	3800.0
620601 457	18	450	457.2	675.0	25.0	M24	M24	4000.0
620601 508	20	500	508.0	715.0	32.0	M30	M24	4000.0
620601 610	24	600	609.6	850.0	32.0	M30	M24	9400.0
620601 762	30	750	762.0	995.0	32.0	M30	M24	9400.0

*Break Load Measurements are subject to 5% tolerance.

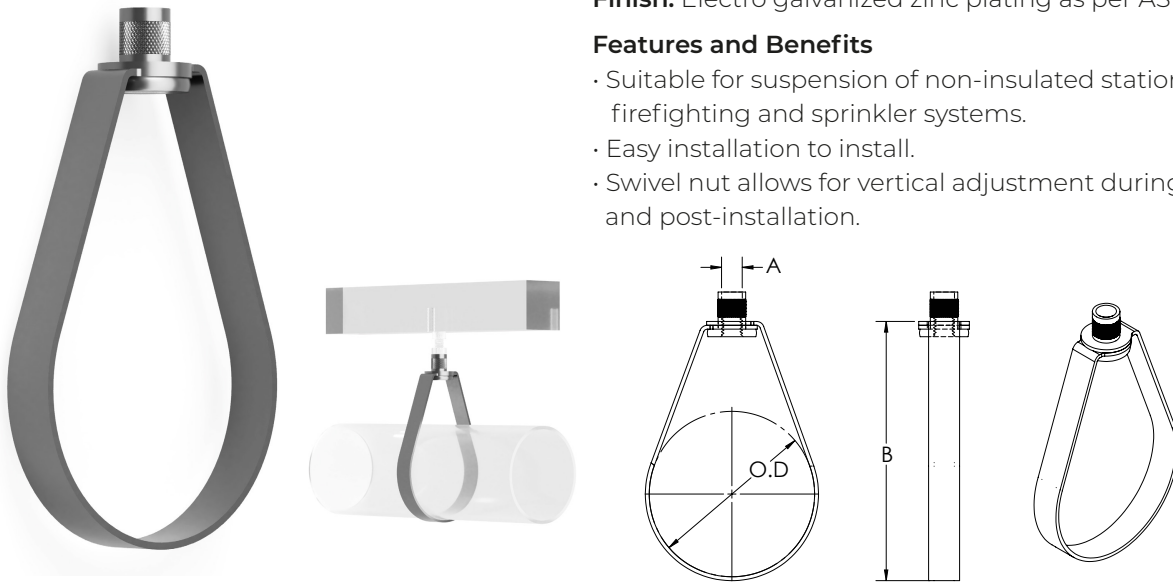
Unlined Sprinkler Hanger Series 01

Material: Mild Steel

Finish: Electro galvanized zinc plating as per ASTM B 633 standard

Features and Benefits

- Suitable for suspension of non-insulated stationary pipes in firefighting and sprinkler systems.
- Easy installation to install.
- Swivel nut allows for vertical adjustment during and post-installation.



Product Code	Nominal Pipe Size		Pipe O.D. (mm)	Dimensions (mm)				Max. Load (Kg)*
	Inch	DN (mm)		Height A	Top Hole Dia. B	Hanger Rod Dia. C	Cross Bolt Dia. D	
620501 021	½	15	21.3	68.0	11.0	M10		350
620501 027	¾	20	26.7	72.0	11.0	M10	M8	350
620501 033	1	25	33.4	76.0	11.0	M10	M8	350
620501 042	1 ¼	32	42.1	87.0	11.0	M10	M8	350
620501 048	1 ½	40	48.2	97.0	11.0	M10	M8	350
620501 060	2	50	60.3	114.0	11.0	M10	M8	350
620501 073	2 ½	65	73.0	142.0	13.0	M12	M10	780
620501 089	3	80	88.9	165.0	13.0	M12	M10	780
620501 114	4	100	114.3	202.0	13.0	M12	M10	780
620501 141	5	125	141.3	236.0	13.0	M12	M12	1250
620501 168	6	150	168.3	278.0	13.0	M12	M12	1250
620501 219	8	200	219.1	338.0	13.0	M12	M12	2100
620501 273	10	250	273.0	419.0	17.0	M16	M16	2100
620501 324	12	300	323.8	490.0	21.0	M20	M20	2100
620501 356	14	350	355.6	556.0	21.0	M20	M20	3800
620501 406	16	400	406.4	610.0	25.0	M24	M20	3800
620501 457	18	450	457.2	675.0	25.0	M24	M24	4000
620501 508	20	500	508.0	715.0	32.0	M30	M24	4000
620501 610	24	600	609.6	850.0	32.0	M30	M24	9400
620501 762	30	750	762.0	995.0	32.0	M30	M24	9400

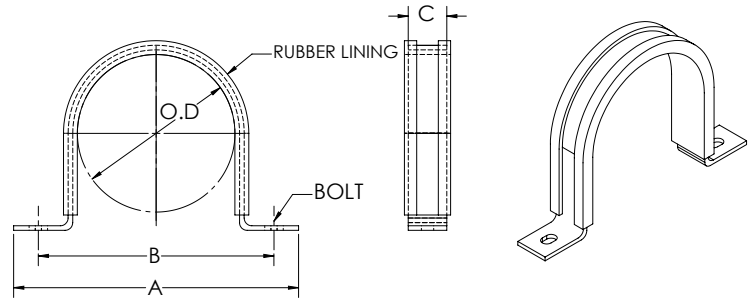


Material: Mild Steel with EPDM lining

Finish: Electro galvanized as per ASTM B 633 Standards

Features and Benefits

- Suited for horizontal or vertical installation of pipes to walls or ceilings.
- Vibration and Sound Control tested & verified with highly elastic lining.
- EPDM lining rated for 120° C to -20° C temperature range.



Product Code	Nominal Pipe Size		Pipe O.D. (mm)	Dimensions (mm)			Bolt Size (mm)	Max. Load* (Kg)
	Inch	DN (mm)		A	B	C		
621101 021	½	15	21.3	76	51	20	M8	500
621101 027	¾	20	26.7	82	57	20	M8	500
621101 033	1	25	33.4	89	64	20	M8	500
621101 042	1 ¼	32	42.2	96	71	20	M8	500
621101 048	1 ½	40	48.3	102	77	20	M8	500
621101 054	-	-	54.0	108	83	20	M8	500
621101 060	2	50	60.3	114	89	20	M8	500
621101 067	-	-	67.0	121	96	25	M8	500
621101 073	2 ½	65	73.0	145	113	25	M8	600
621101 082	-	-	82.0	152	120	25	M8	600
621101 089	3	80	88.9	160	128	25	M8	600
621101 102	3 ½	-	101.6	170	138	25	M8	600
621101 108	-	-	108.0	178	146	25	M8	600
621101 114	4	100	114.3	185	153	25	M8	600
621101 126	-	-	126.0	196	164	30	M8	600
621101 141	5	125	141.3	210	178	30	M10	600
621101 148	-	-	148.0	218	186	30	M10	600
621101 155	-	-	155.0	225	193	30	M10	600
621101 168	6	150	168.3	237	205	30	M10	600
621101 179	-	-	179.0	249	217	30	M10	600
621101 190	-	-	190.0	260	228	30	M10	800
621101 205	-	-	205.0	275	243	30	M10	800
621101 219	8	200	219.1	289	257	30	M10	800
621101 230	-	-	230.0	300	268	30	M10	800
621101 241	-	-	241.0	332	291	30	M12	1250
621101 263	-	-	263.0	354	313	30	M12	1250
621101 273	10	250	273.0	364	323	30	M18	1250
621101 295	-	-	295.0	386	345	40	M18	1250

*Break Load Measurements are subject to 5% tolerance.

Unlined U Strap Series 01

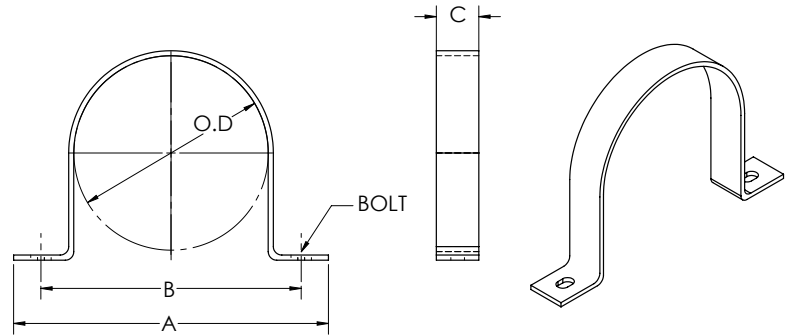


Material: Mild Steel

Finish: Electro galvanized as per ASTM B 633 Standards

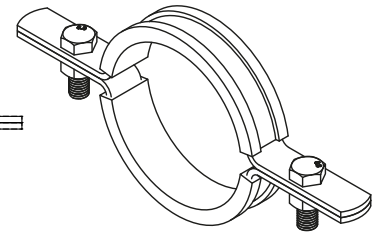
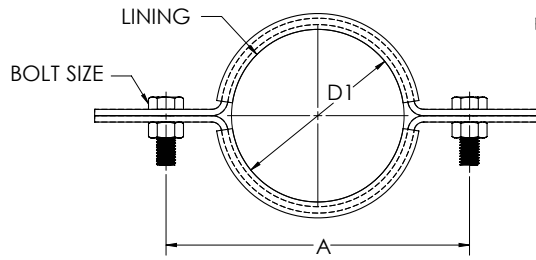
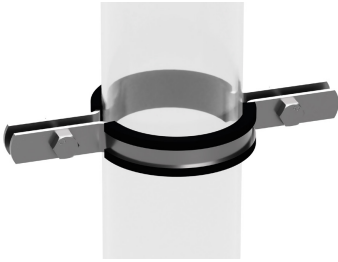
Features and Benefits

- Suited for horizontal or vertical installation of pipes to walls or ceilings.
- Rated for maximum temperature of 343° C.



Product Code	Nominal Pipe Size		Pipe O.D. (mm)	Dimensions (mm)			Bolt Size (mm)	Max. Load* (Kg)
	Inch	DN (mm)		A	B	C		
621001 021	½	15	21.3	76	51	20	M8	500
621001 027	¾	20	26.7	82	57	20	M8	500
621001 033	1	25	33.4	89	64	20	M8	500
621001 042	1 ¼	32	42.2	96	71	20	M8	500
621001 048	1 ½	40	48.3	102	77	20	M8	500
621001 054	-	-	54.0	108	83	20	M8	500
621001 060	2	50	60.3	114	89	20	M8	500
621001 067	-	-	67.0	121	96	25	M8	500
621001 073	2 ½	65	73.0	145	113	25	M8	600
621001 082	-	-	82.0	152	120	25	M8	600
621001 089	3	80	88.9	160	128	25	M8	600
621001 102	3 ½	90	101.6	170	138	25	M8	600
621001 108	-	-	108.0	178	146	25	M8	600
621001 114	4	100	114.3	185	153	25	M8	600
621001 126	-	-	126.0	196	164	30	M8	600
621001 141	5	125	141.3	210	178	30	M10	600
621001 148	-	-	148.0	218	186	30	M10	600
621001 155	-	-	155.0	225	193	30	M10	600
621001 168	6	150	168.3	237	205	30	M10	600
621001 179	-	-	179.0	249	217	30	M10	600
621001 190	-	-	190.0	260	228	30	M10	800
621001 205	-	-	205.0	275	243	30	M10	800
621001 219	8	200	219.1	289	257	30	M10	800
621001 230	-	-	230.0	300	268	30	M10	800
621001 241	-	-	241.0	332	291	30	M12	1250
621001 263	-	-	263.0	354	313	30	M12	1250
621101 273	10	250	273.0	364	323	30	M18	1250
621101 295	-	-	295.0	386	345	40	M18	1250

Lined Riser Hanger Series 01



Material: Mild Steel with EPDM lining

Finish: Electro galvanized as per ASTM B 633 Standards

Features and Benefits

- For rigid supports for vertical installation of pipes.
- Elastic lining for vibration and sound absorption.
- High load capacity from strengthened bolts.
- EPDM lining rated for 120° C to -20° C temperature range.

Product Code	Nominal Pipe Size		Pipe O.D (mm)	Dimensions (mm)	Bolt Size (mm)	Max. Load* (Kg)
	Inch	DN (mm)		A		
621301 021	½	15	21.3	57	M10	1250
621301 027	¾	20	26.7	68	M10	1250
621301 033	1	25	33.4	76	M10	1250
621301 042	1 ¼	32	42.2	90	M10	1250
621301 048	1 ½	40	48.3	110	M10	1250
621301 060	2	50	60.3	130	M10	1850
621301 073	2 ½	65	73.0	142	M12	1850
621301 089	3	80	88.9	161	M12	2250
621301 114	4	100	114.3	190	M12	3600
621301 168	6	150	168.3	258	M16	4500
621301 219	8	200	219.1	333	M16	4500
621301 273	10	250	273.0	409	M16	5800
621301 324	12	300	323.8	467	M20	7300

*Break Load Measurements are subject to 5% tolerance.

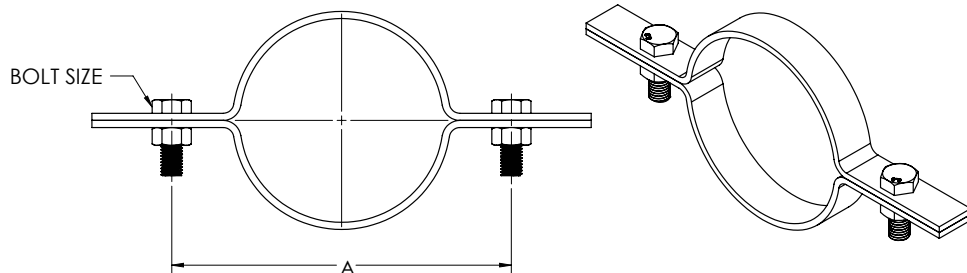
Unlined Riser Hanger Series 01

Material: Mild Steel

Finish: Electro galvanized as per ASTM B 633 Standards

Features and Benefits

- For rigid support or guide for vertical pipes.
- High load capacity from strengthened bolts.
- Rated for maximum temperature of 343° C.



Product Code	Nominal Pipe Size		Pipe O.D (mm)	Dimensions (mm)	Bolt Size (mm)	Max. Load* (Kg)
	Inch	DN (mm)		A		
621401 021	½	15	21.3	57	M10	1250
621401 027	¾	20	26.7	68	M10	1250
621401 033	1	25	33.4	76	M10	1250
621401 042	1 ¼	32	42.2	90	M10	1250
621401 048	1 ½	40	48.3	110	M10	1250
621401 060	2	50	60.3	130	M10	1850
621401 073	2 ½	65	73.0	142	M12	1850
621401 089	3	80	88.9	161	M12	2250
621401 114	4	100	114.3	190	M12	3600
621401 168	6	150	168.3	258	M16	4500
621401 219	8	200	219.1	333	M16	4500
621401 273	10	250	273.0	409	M16	5800
621401 324	12	300	323.8	467	M20	7300

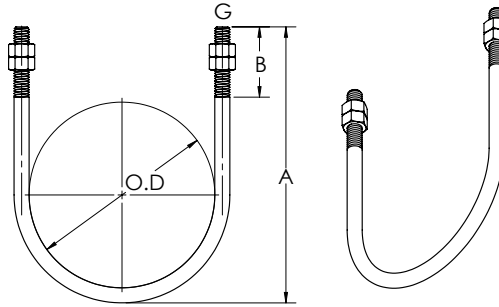


Material: Mild Steel with EPDM lining

Finish: Electro galvanized as per ASTM B 633 Standards

Features and Benefits

- For restricting lateral movement and securing piping to structural members.
- High load capacity due to single constructed part.
- Supplied with washers and nuts.
- Rated for maximum temperature of 399° C.



Product Code	Nominal Pipe Size		Pipe O.D. (mm)	Dimensions (mm)		Bolt Thread Size G (mm)	Max. Load* (Kg)
	Inch	DN (mm)		A	B		
620801 021	½	DN15	21.3	65	50	M10	550
620801 027	¾	DN20	26.7	77	50	M10	550
620801 033	1	DN25	33.4	85	50	M10	550
620801 042	1 ¼	DN32	42.1	93	50	M10	550
620801 048	1 ½	DN40	48.2	100	50	M10	550
620801 060	2	DN50	60.3	110	50	M10	550
620801 073	2 ½	DN65	73	127	50	M12	900
620801 089	3	DN80	88.9	140	50	M12	900
620801 114	4	DN100	114.3	165	50	M12	900
620801 141	5	DN125	141.3	190	50	M12	900
620801 168	6	DN150	168.3	220	50	M12	900
620801 219	8	DN200	219.1	295	75	M16	1900
620801 273	10	DN250	273	370	100	M20	3200
620801 324	12	DN300	323.8	420	100	M20	3200
620801 356	14	DN350	355.6	455	100	M20	3200
620801 406	16	DN400	406.4	505	100	M20	3200
620801 457	18	DN450	457.2	555	100	M24	4400
620801 508	20	DN500	508	605	100	M24	4400
620801 610	24	DN600	609.6	710	100	M24	4400

*Break Load Measurements are subject to 5% tolerance.

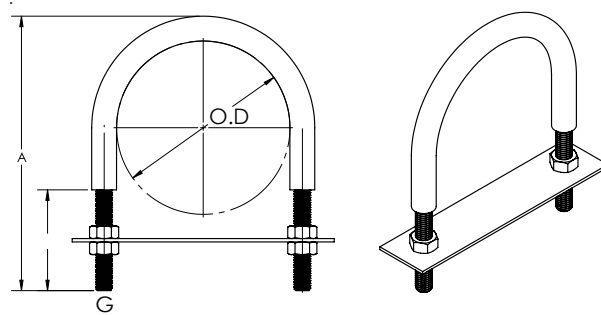
Lined U-Bolt Series 01



Material: Mild Steel with EPDM rubber lining
Finish: Electro galvanized as per ASTM B 633 Standards

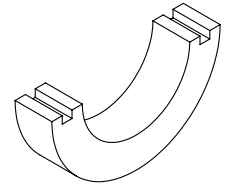
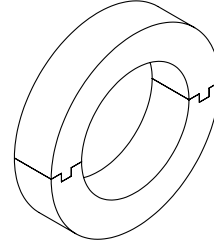
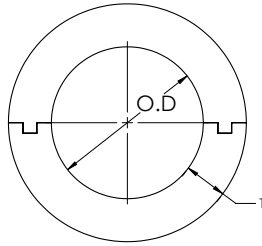
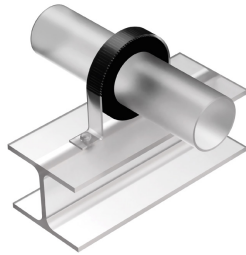
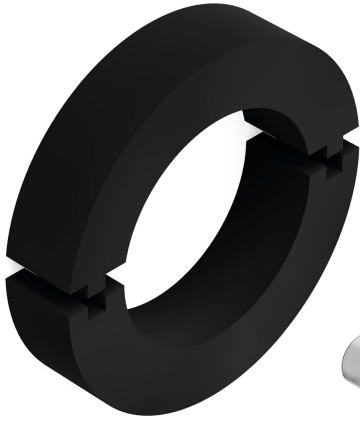
Features and Benefits

- For restricting lateral movement and securing piping to structural members.
- High load capacity due to single constructed part.
- Supplied with washers and nuts.
- EPDM lining reduced noise up to 18 dB.
- EPDM lining rated for 120° C to -20° C temperature range.



Product Code	Nominal Pipe Size		Pipe O.D. (mm)	Dimensions (mm)		Bolt Thread Size G (mm)	Max. Load* (Kg)
	Inch	DN (mm)		A	B		
620901 021	½	DN15	21.3	65	50	M10	550
620901 027	¾	DN20	26.7	77	50	M10	550
620901 033	1	DN25	33.4	85	50	M10	550
620901 042	1 ¼	DN32	42.1	93	50	M10	550
620901 048	1 ½	DN40	48.2	100	50	M10	550
620901 060	2	DN50	60.3	110	50	M10	550
620901 073	2 ½	DN65	73	127	50	M12	900
620901 089	3	DN80	88.9	140	50	M12	900
620901 114	4	DN100	114.3	165	50	M12	900
620901 141	5	DN125	141.3	190	50	M12	900
620901 168	6	DN150	168.3	220	50	M12	900
620901 219	8	DN200	219.1	295	75	M16	1900
620901 273	10	DN250	273	370	100	M20	3200
620901 324	12	DN300	323.8	420	100	M20	3200
620901 356	14	DN350	355.6	455	100	M20	3200
620901 406	16	DN400	406.4	505	100	M20	3200
620901 457	18	DN450	457.2	555	100	M24	4400
620901 508	20	DN500	508	605	100	M24	4400
620901 610	24	DN600	609.6	710	100	M24	4400

Rubber Support Insert Series 01



Material: EPDM rubber

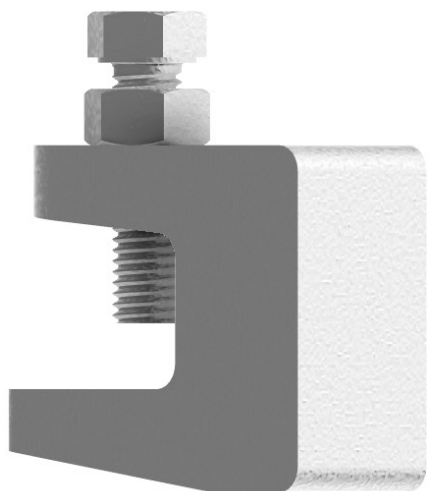
Features and Benefits

- Recommended for use at supporting points of insulated pipes to prevent crushing of insulation.
- Tongue and groove design for smaller sizes.
- Highly resistant to deterioration and distortion.
- Thermal conductivity of 0.16 W/moC.
- EPDM rubber rated for 110o C to -20oC temperature range.

Nominal Pipe Sizes		Schedule 40 Steel Pipe O.D. (mm)	Part number for Rubber Support Inserts for respective thickness (T) sizes							
Inch	DN (mm)		1/2" (13 mm)	3/4" (19 mm)	1" (25 mm)	1 1/4" (32 mm)	1/2" (38 mm)	2" (50 mm)	2 1/2" (65 mm)	3" (75 mm)
1/2	DN15	21.3	621201 021	621202 021	621203 021	621204 021	621205 021	621206 021	621207 021	621208 021
3/4	DN20	26.7	621201 027	621202 027	621203 027	621204 027	621205 027	621206 027	621207 027	621208 027
1	DN25	33.4	621201 033	621202 033	621203 033	621204 033	621205 033	621206 033	621207 033	621208 033
1 1/4	DN32	42.1	621201 042	621202 042	621203 042	621204 042	621205 042	621206 042	621207 042	621208 042
1 1/2	DN40	48.2	621201 048	621202 048	621203 048	621204 048	621205 048	621206 048	621207 048	621208 048
2	DN50	60.3	621201 060	621202 060	621203 060	621204 060	621205 060	621206 060	621207 060	621208 060
2 1/2	DN65	73	621201 073	621202 073	621203 073	621204 073	621205 073	621206 073	621207 073	621208 073
3	DN80	88.9	621201 089	621202 089	621203 089	621204 089	621205 089	621206 089	621207 089	621208 089
3 1/2	DN90	101.6	621201 102	621202 102	621203 102	621204 102	621205 102	621206 102	621207 102	621208 102
4	DN100	114.3	621201 114	621202 114	621203 114	621204 114	621205 114	621206 114	621207 114	621208 114
5	DN125	141.3	621201 141	621202 141	621203 141	621204 141	621205 141	621206 141	621207 141	621208 141
6	DN150	168.3	621201 168	621202 168	621203 168	621204 168	621205 168	621206 168	621207 168	621208 168
8	DN200	219.3	621201 219	621202 219	621203 219	621204 219	621205 219	621206 219	621207 219	621208 219
10	DN250	273	621201 273	621202 273	621203 273	621204 273	621205 273	621206 273	621207 273	621208 273
12	DN300	232.8	621201 233	621202 233	621203 233	621204 233	621205 233	621206 233	621207 233	621208 233
14	DN350	355.6	621201 356	621202 356	621203 356	621204 356	621205 356	621206 356	621207 356	621208 356
16	DN400	406.4	621201 406	621202 406	621203 406	621204 406	621205 406	621206 406	621207 406	621208 406
18	DN450	457.2	621201 457	621202 457	621203 457	621204 457	621205 457	621206 457	621207 457	621208 457
20	DN500	508	621201 508	621202 508	621203 508	621204 508	621205 508	621206 508	621207 508	621208 508
24	DN600	609.6	621201 610	621202 610	621203 610	621204 610	621205 610	621206 610	621207 610	621208 610

** Measured for pipe outer diameter. *Break Load Measurements are subject to 5% tolerance.

Beam Clamp Series 01

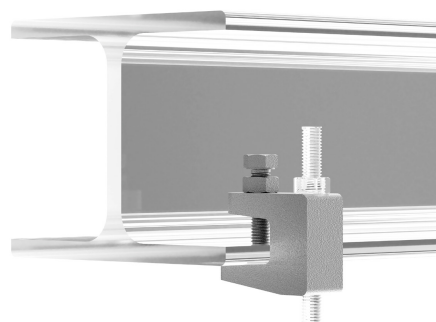
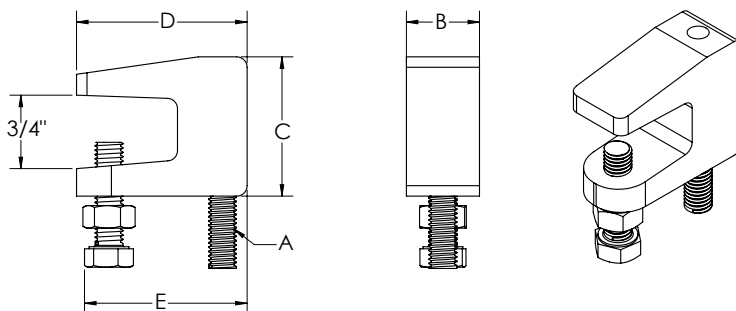


Material: Ductile Iron ASTM A536, Grade 65-45-12

Finish: Electro Galvanized as per ASTM B 633

Features and Benefits

- Beam clamps are designed to clamp the hanger rod to the beam's top flange.
- U shaped design allows for adjustment and use in an inverted position on bottom flange of beam as well.



Product Code	A		Dimensions (mm)				Max Pipe Size (Inch)	Max. Load (Kg)*
	Inch	mm	B	C	D	E		
640301 010	3/8	10	21	40	49	42	4	115
640301 012	1/2	12	30.2	46.1	55.6	46.5	8	340

Pipe Support Products

Whilst all reasonable care has been taken in compiling the information in this document, the designs, dimensions, specifications, weights photos shown are indicative only and non binding. These data should not be relied upon without our prior written approval. Due to our policy of continuous development, we reserve the right to modify/discontinue the design, construction or appearance of goods mentioned in this document, website and any other publication including installation manuals, price lists any time without notice and without re-course. Project pictures, product models, certifications and approvals shown may also be of the similar product but sold under other brand. All products are not available in every country. Copy, reprinting and photo-mechanical re-production, also in extracts is forbidden without our written agreement.

Email : info@eautek.com
Web : www.eautek.com

EAU TECHNIK GmbH
Herriotstr. 1
60528 Frankfurt am Main, Germany

EAU TECHNIK INDIA Pvt. Ltd.
Sanjay Nagar
Bangalore – 560 094, India.